

# Four-axis motion controller manual offline

## A. Safety Precautions

Before using this control system, please read this manual carefully before do related operations.

Carefully read the operating instructions and user Safety Precautions, the user should do the appropriate protection, take the necessary security measures before proceeding to operate.

First time operation of the operator, should know the proper use of the corresponding functions, you can perform the appropriate action, For those unfamiliar the functions or parameters, Prohibited actions or change system parameters.

### **System maintenance:**

When the system is under unusual circumstances, the need to repair the appropriate cable or socket connection, you should turn off power. And then make the necessary repair.

The operator has not been rigorously trained or authorized by the studio units or individuals, can not open the control system for maintenance operations, modification, repair, and other acts.

### **Other matters:**

If there is any system functions is different from the manual,please with system software features to prevail.

Control system functions to change or improve (upgrade), without notice. If you have other requirements, please contact us.

## B: Outline

Our latest "motion controller" using high-performance 32-bit CPU,with an LCD display, Humanized Window-type interface, Using external TF card memory, storage space than 2G, Operating voltage and control voltage using isolation mode, and touch keyboard. The system has high reliability, high precision, low noise, easy operation characteristics.

The controller can four simultaneous axes,multiple micro segment look ahead control algorithm, The controller can four simultaneous axes,multiple micro segment look ahead control algorithm, can be achieved with four - axis straight line interpolation and a micro multi-line multi-axis continuous interpolation,controlled by a breakpoint carving.

Simple, clear parameters for your convenience and fast operation. Input / output can be set up functions to facilitate your use and maintenance.

The main function

Parameter settings: You can set the processing and operations relating control parameters, Making process to achieve the best condition.

Manual operation: can be achieved manually, jog,back to procedure zero, back to mechanical zero, cleared coordinate operations.

Program Management: Program can create, delete, modify, read, preserve, automatic processing, continuous, and pause.

External Manual: a variety of external functions can be defined Manually,In order to facilitate the use of the freedom to select the input function: the limited input can achieve a variety of user needs.

---

### System components

CNC system mainly consists of the following parts:

High-performance, high-speed 32-bit ARM CPU;

Liquid crystal display (resolution: 320 \* 240);

Input / Output (16 channels opto-isolated 10MA inputs, 16 channels opto-isolated pull-down tank 500MA output).

Users machining program memory can be arbitrary Storage in TF card.

Technical indicators:

The smallest unit of data 0.0001mm

The maximum data size  $\pm 99999.999$ mm

Maximum pulse output frequency 50KHZ (three-axis simultaneous 50KHZ)

Control axes 4 axes (X, Y, Z, A)

4-axis intermodal and has a four-axis multi-micro multi-segment prospective interpolation control

Appearance and Panel: Dimensions: length 165, width 101, thickness 50

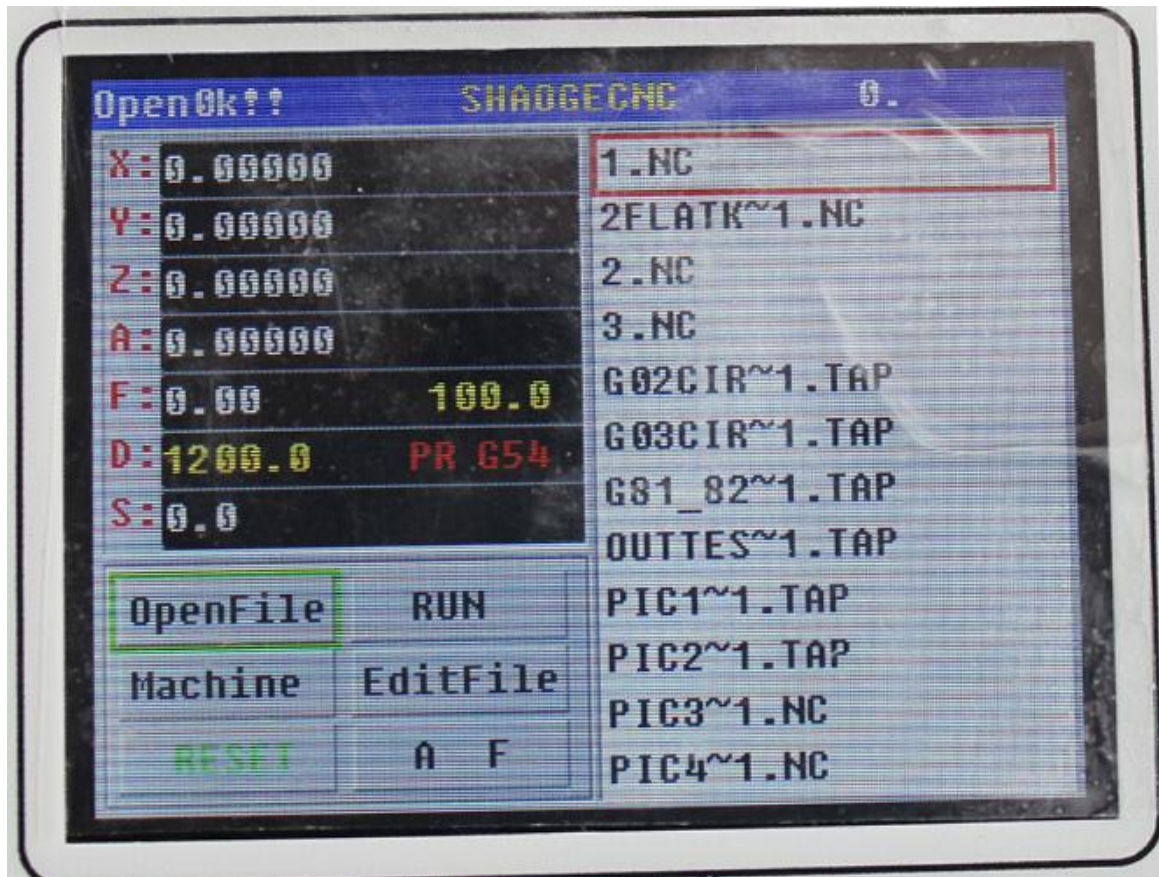
### External view





### C.Operating Instructions

Boot screen



Function key area:

Open the file

Starts running

Advanced features

Document Management

RESET ( RESET )

Jog

The following screen appears after the control system is powered

This boot interface is divided into four zones :

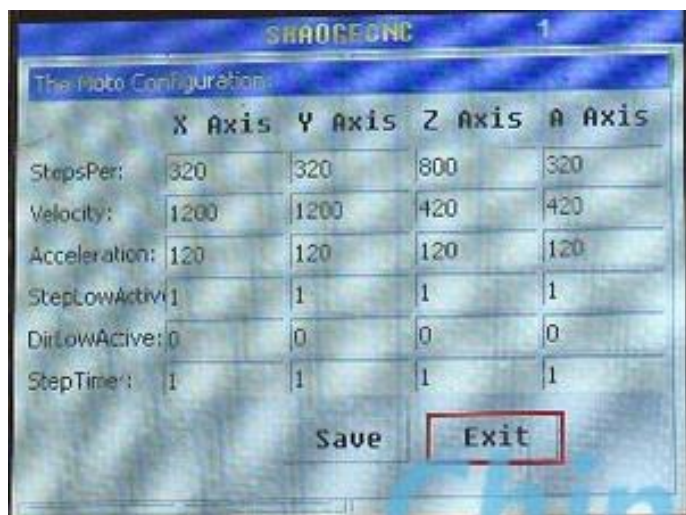
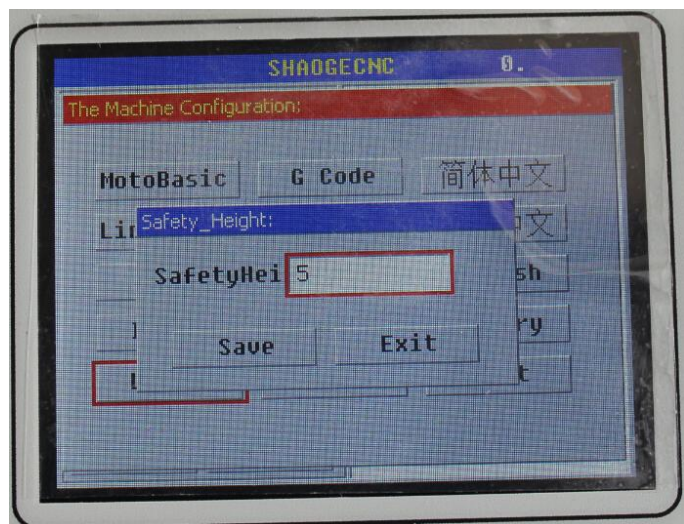
- the top district: the main display file name now opens, real-time the number of processing rows.
- the coordinate display area: The main display real-time three-axis coordinate and real-time processing speed.
- the function key area: the main control keys.
- file area: file name, or processed documents.

(Note: TF card support hot swap, when the new insert TF card, need to initialization after re-insert, so sometimes prompts OPENER, Just several times "open file" !)

Because the system requirements for the TF card data is extremely strict, so the general low-end cards (cottage card) will be excluded, and then replace the other genuine card reading! ! !

For HDS (TF), because of the card problem, and can not fully understand, replace other cards and then read!

Machine Configuration Click the "Advanced Features" below, then click "motor parameters" to enter the following screen :



Word meaning explanation:

Pulse equivalent: the required number of pulses per unit length, (pulse volume required for each millimeter) support floating-point input

Maximum speed: maximum speed of this motor can run (mm / min), when the input exceeds the maximum that the system can be achieved, The maximum is the system can be achieved.

Acceleration: Maximum acceleration of the motor can run, this value is too small will be more seriously affected micro segment corner speed.

Pulse level: 1 or 0, active high or active low, determined by the drive.

Direction level: 1 or 0, active high or active low, this change will change running direction.

Pulse Width: Pulse valid output time, only one value, normally can take 0.

Pulse equivalent = (Stepper motor driver number of subdivisions \* 360 / stepper motor step angle) / screw thread pitch.

Example: Step angle = 1.8 screw pitch = 5mm segments = 8

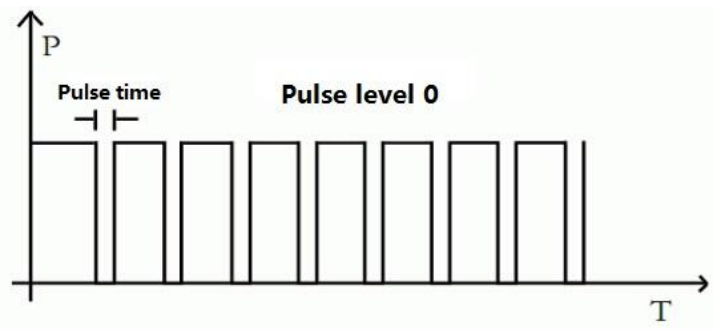
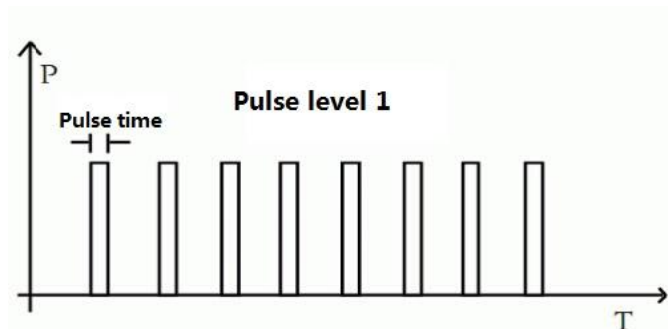
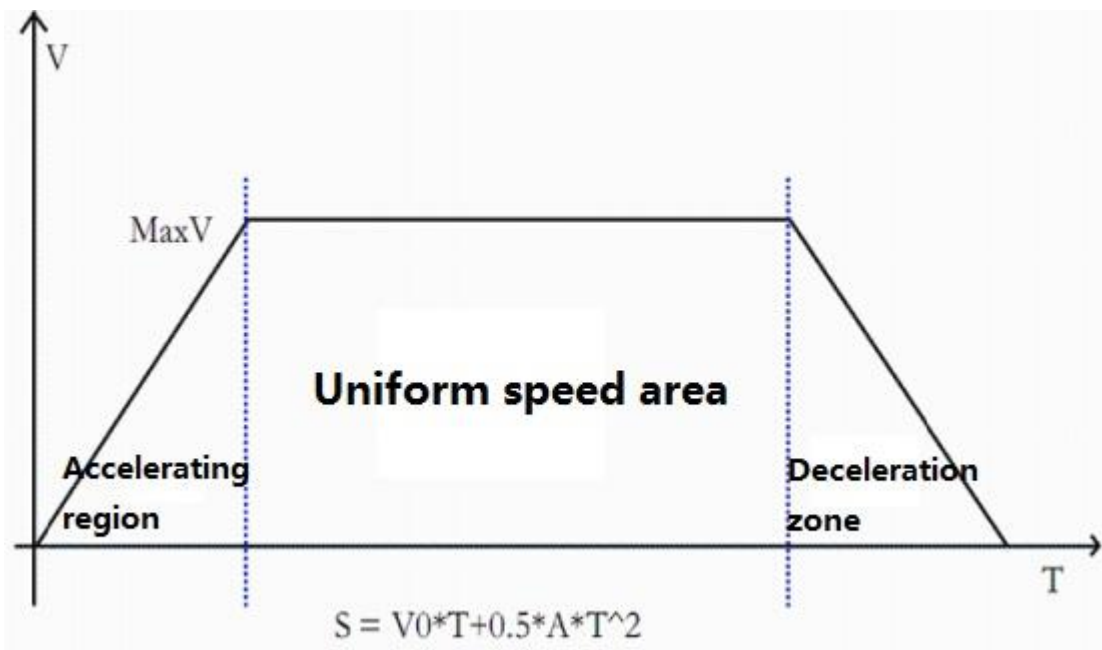
pulses equivalent =  $8 * (360/1.8) / 5 = 320$

Maximum speed value: the ability to be finalized in accordance with the motor, based on not fall out step, take 70% of maximum speed values, leaving 30% margin to the motor (characteristics of stepper motor).

**T acceleration table is as follows :**

Acceleration values : the ability to be finalized in accordance with the motor, based on not fall out step, take 70% of maximum speed values, leaving 30% margin to the motor (characteristics of stepper motor).

Pulse relationship level and pulse width (Note: The actual width is Given width Plus default width)



Direction level

When the direction level of 1, the shaft is running, the Output is high level, Anti-run is low level ;

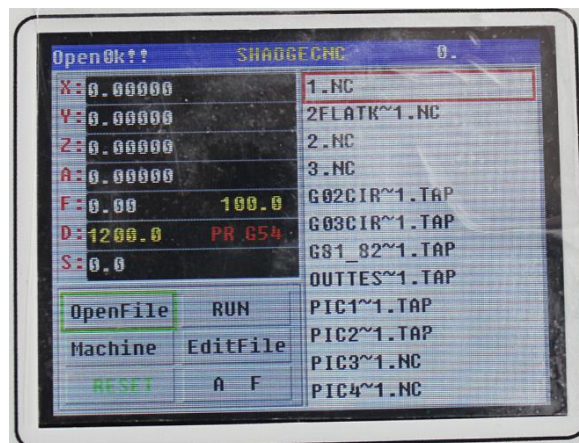
When the direction level of 0, the shaft is running, the Output is low level, Anti-run is high level.

### Open the file

File name appears in the display field, the file name format is the standard format 8\_3, 8 character names, 3 suffix.

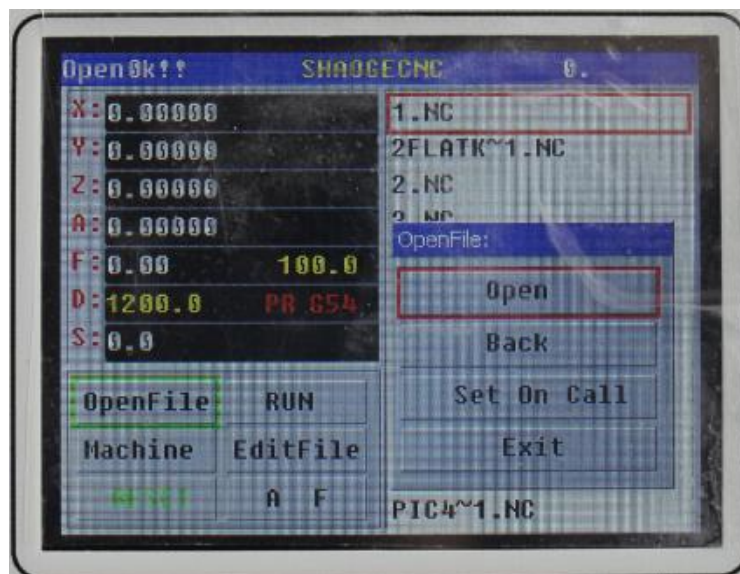
When displaying the Chinese have four Chinese name, the three suffixes, more than four will not give the full name displayed, with ~ N instead of advanced rotating function keys, or function keys can flip down display.

Click the function key in the middle of advanced button or "OK" button to select the file, enter the following interface.



At this time you can open the file, or return the file selection (re-select), or exit to the main screen

Click "Open file" access to the contents of the file are shown below:



You can now browse the contents of a file, click the Advanced Function button the middle button, Or OK button brings up a menu interface:



You can select whether to start from the first row, or starting from the N line, or point to the N-line display, you can also choose to re-select the file directly back to the file.

After selecting input baskets, You can enter the number of lines needed, Enter then select "pointing to select the line" you can jump directly to a specific number of rows, As for the Extra large, super multi-line, time-consuming will be longer!

If input rows is greater than file rows itself, At this time point to most caudal of the file.

Click on "from the first line to start" and "from the selected line to start", both will jump to the main interface, Open this file is completed, And hand the primary key feature to the main precinct.

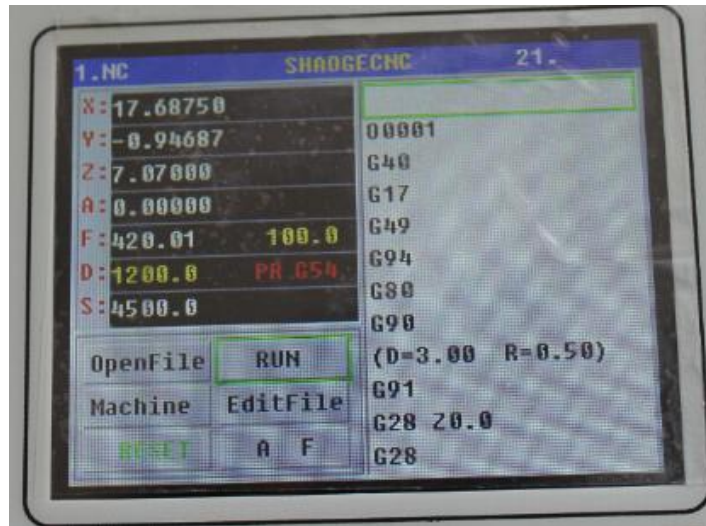
### Starts running

You can start to run directly up! If there is a breakpoint before this, and did not change the file, then a window will pop up as follows:

The first is a safe altitude, the role of safe altitude: In the current head position will be filed with the tool when you want to move to the machining position, this height is safe altitude, where it can be seen as the height of the Z-axis.

After deduction election baskets selected can change this value, You can also change the default safe altitude of the advanced features.

"Continued Point Run": When a breakpoint in the point-to-point between N and N +1, Continued Point will start from N points, Which will be repeated between N to N +1 points have been processed over the tracks, and access to the unfinished track.

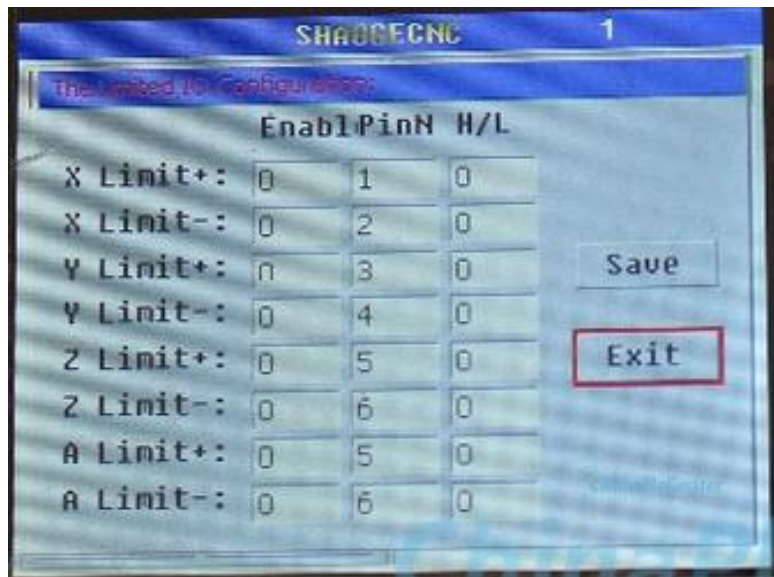


" running before Continued points ":When a breakpoint in the point-to-point between N and N +1, running from N +1 to begin direct before Continued points, Discards N to N +1 line processing track, please pay more attention.

"Exit" to give up this operation.

(Note: When the breakpoint then run large number of rows, Because need to find out Coordinate System and Continued points from the beginning, There will be some computing time, TF card reader speed will affect the current operation speed, number of runs in the top left corner indicates).

**"Limit Input"**



Enable: limit function is selected or not.

Pin: For the limit function is selected, the corresponding input pin (selectable 1-16)

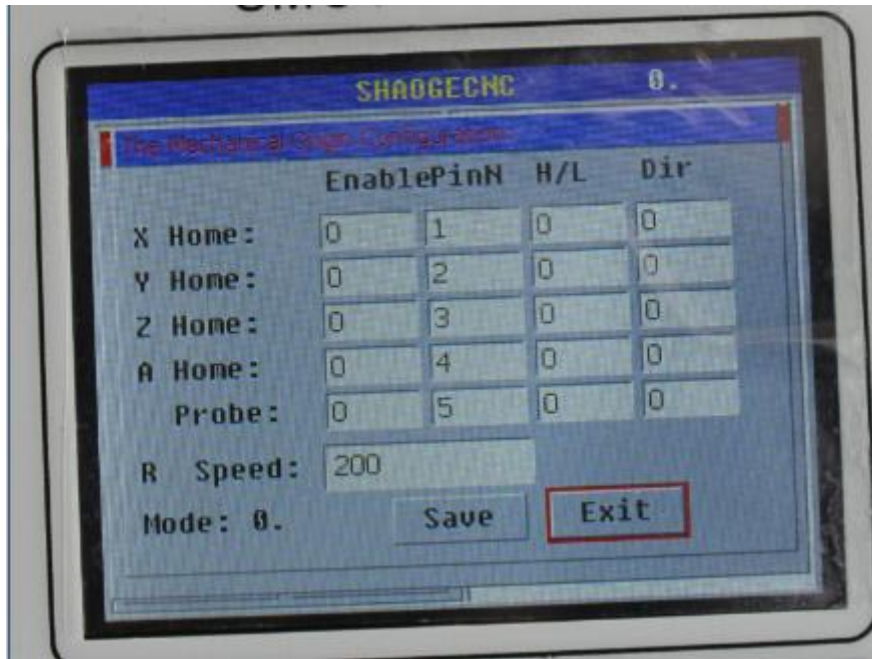
Level: Input high level active or low level active (see Figure simulation)

**"Mechanical origin"**

Enable: limit function is selected or not.

Pin: For the limit function is selected, the corresponding input pin (selectable 1-16)

H/L: Input high level active or low level active (see Figure simulation)



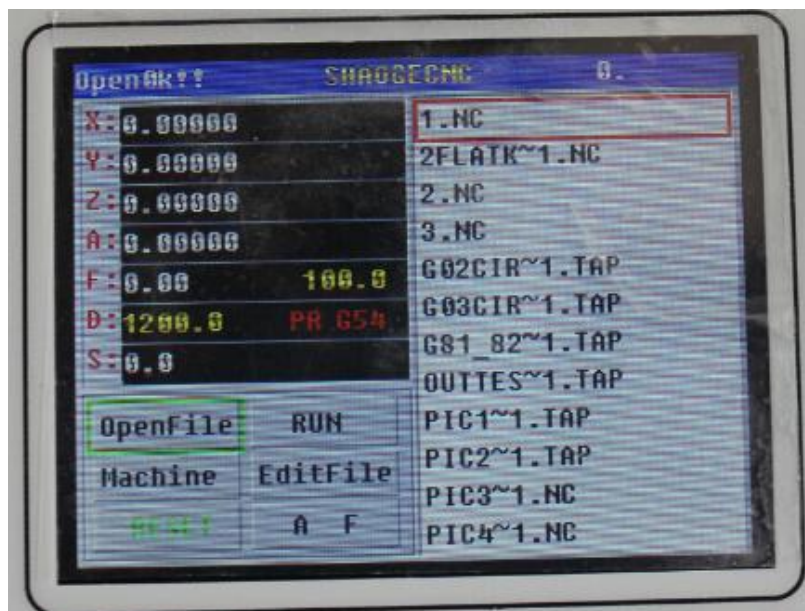
Directions: when Return to machinery XYZ direction, either positive or negative.

Return speed: the speed of returned to the Mechanical point and the knife point.

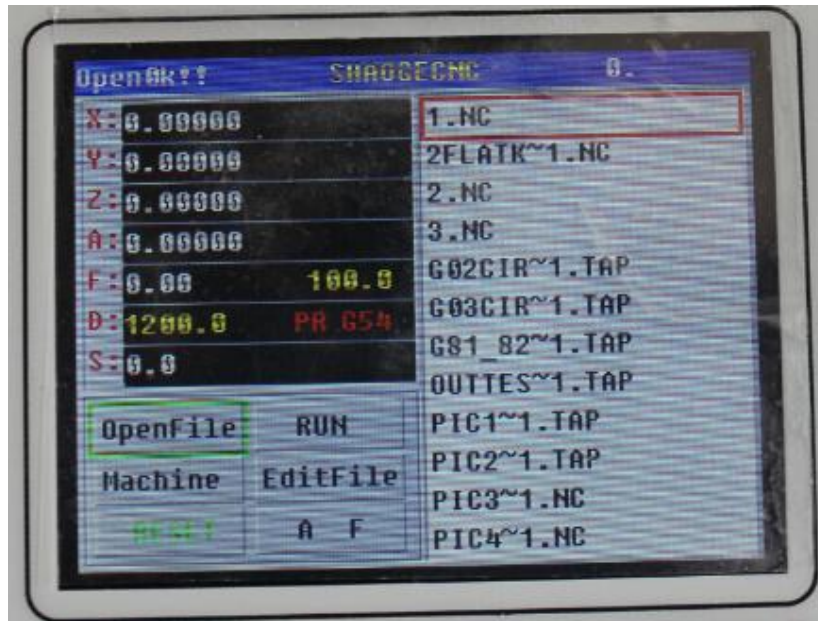
Above Input pin inputs corresponding to 8 controllers, Can arbitrarily designated as the current limit input pin.

### Document Management

Click on "File Manager" icon to the below of the list of files into the interface, you can add new files, delete files, modify the file.



Click on the specified file will enter the following interface:



"Edit this file": You can edit the selected file

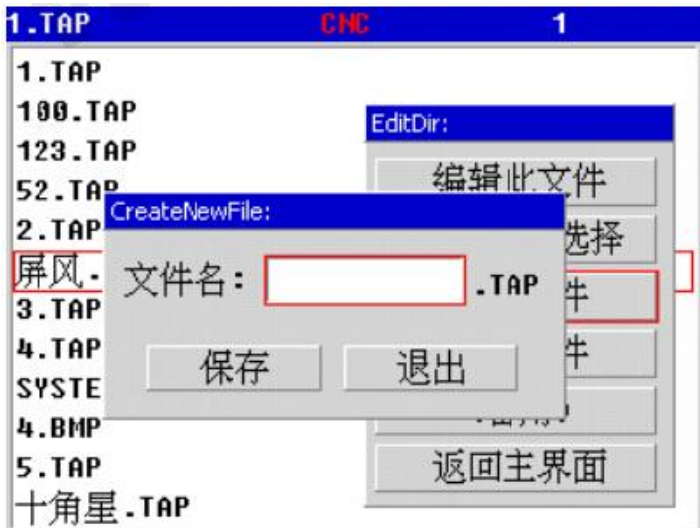
"Return the file selection": Re-select the file

"New File": Create a new document

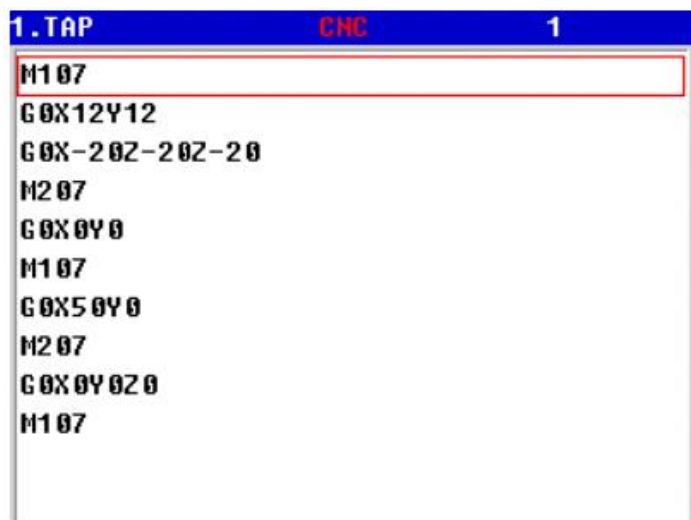
"Delete Files": delete the selected file

"Return to the main interface": direct return to the main interface

**New file and delete the file interface**



**Edit this file**

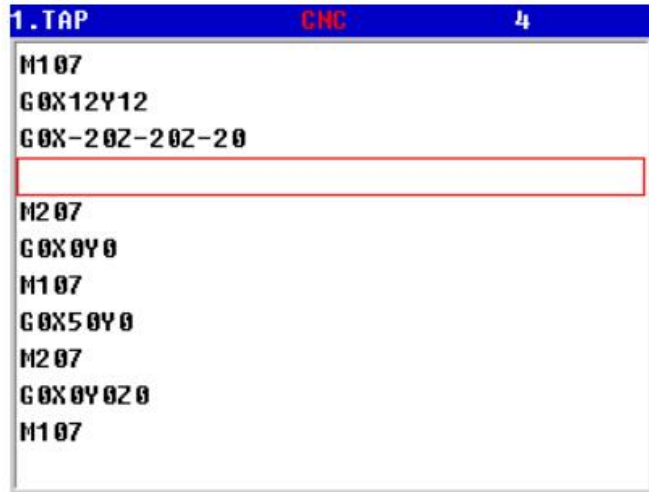


"Edit this line" for editing the selected row



Corresponding key on the control panel, enter the desired G code, then press "OK" button to save and return, ( the old parameters line in the front ),Repair key panel has "←" can abdication modified for the wrong characters .

"Insert Row", remove this line



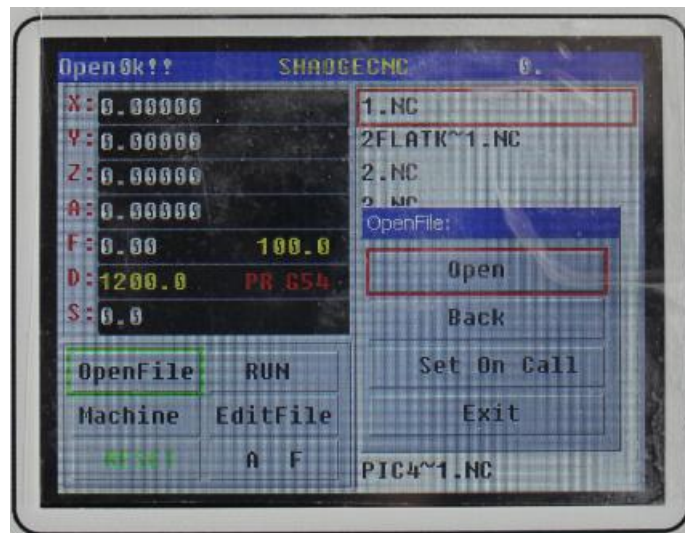
insert blank lines in the front selected row as shown: "Delete this line" will delete the specified row.

"Return row selection" to return G command line to re-selected.

"Return the file selection" returns the file list interface.

Note: If the last instruction of the file is not able to run, in the final document to join a blank line! ! !

**Panel Shortcuts ☺ as "origin Operation"**

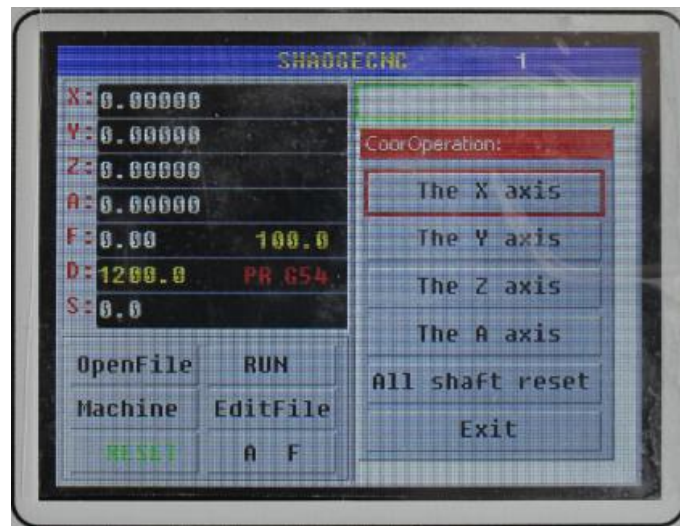


"Return to origin" Z-axis rise to Safe altitude, XY axis back to the origin, Z axis and then passed back to the origin.

"Return to the mechanical origin": Z axis retreated mechanical origin, Y-axis retreated mechanical origin, Y-axis retreated mechanical origin, (please note the configuration foot level and enable)

"Knife" Z-axis decreased (or increased), when it comes to the probe, please stop running then let the Z-axis coordinate is 0, and Z-axis carrying knives to a safe altitude, the end of this process. (Please note that the configuration of the feet, the level and enable)

**Panel shortcut ☿ to "coordinate cleanup operation."**



X-axis uniaxial cleared

Y-axis uniaxial cleared

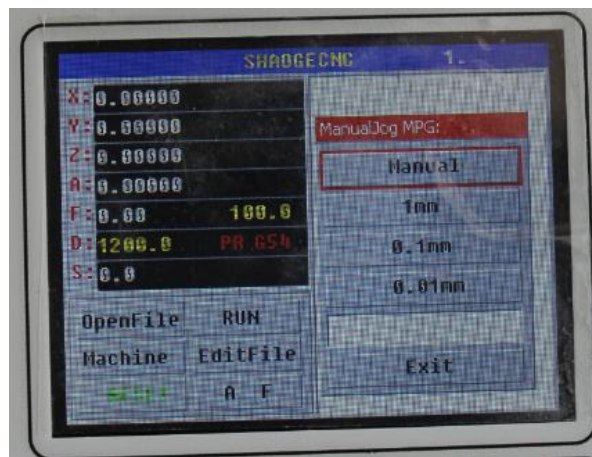
Z-axis uniaxial cleared

A shaft uniaxial cleared

All axes cleared

Exit

**Panel shortcuts ▣ "Manual and Jog "**



“Manual”Recovery Manual

“1mm”: When selected press the corresponding arrow keys will move the corresponding length (incremental moves)

If the current X-axis coordinate X: 1.235, select 1mm

If you press X +, X-axis immediately moved 2.235

If you press the X-, X-axis is moved immediately 0.235

If you want to move to a specific length, you can enter the specific numbers in the input baskets.

(Only press "OK" button to turn yellowish after baskets can be entered,Returns green effectively),  
Press the corresponding axis direction key.

Corresponding X + X-Y + Y-Z + Z-A + A-are valid

**Panel Shortcuts X Y Z A "direct coordinate operations."**

"Run to" corresponding axis directly run to the specified coordinates.

"Change coordinates": corresponding axes directly change toto the number set (This operation is not reversible, please carefully Operation)



**Spindle control**

**M03 , M04 , M05**

M03 clockwise run: Now close the M04 corresponding pin, open the M03 corresponding pin.

M04 anti-clockwise run: Now close the M03 corresponding pin, open the M04 corresponding pin.

M05 will also close the M03, M04's pin

**M07 , M08 , M09**

M07 open the corresponding pin will not affect the M08

M08 open the corresponding pin will not affect the M07

M09 will also close the M07, M08's pin

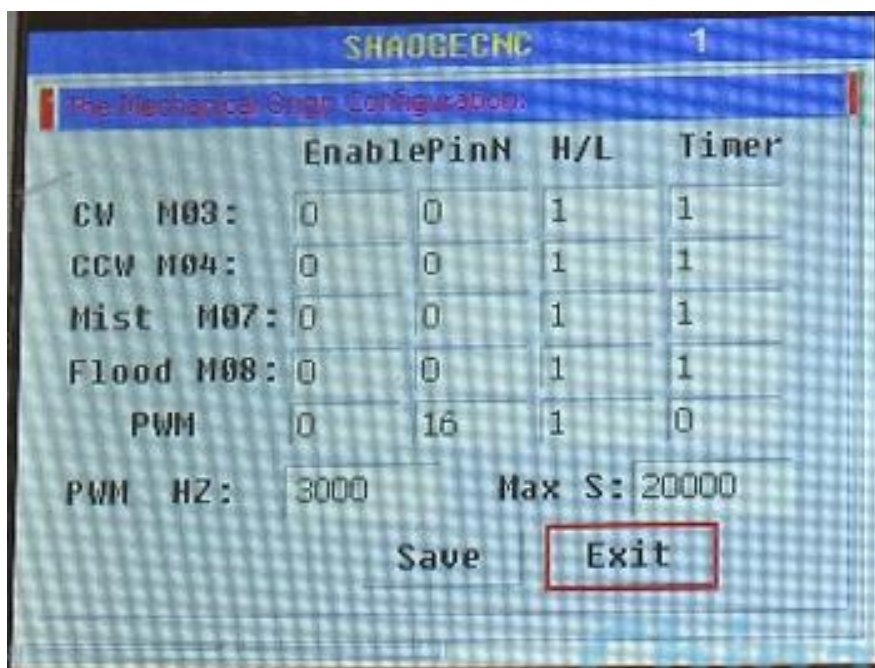
Delay: Open M03, M04, M07, M08 time spent

PWM pin is fixed at 16 feet, such as opening the pin corresponding to the OUT output should be removed, or due to both control and conflict! ! !

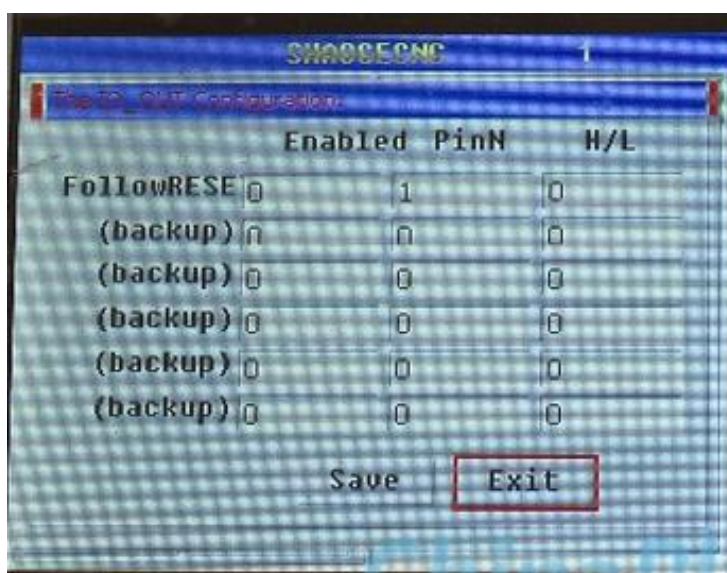
PWM Frequency: refers to the frequency output

MAXS: refers to the maximum S corresponding to the maximum frequency was

Duty Cycle = S (G instructions given value) / (MAX S)



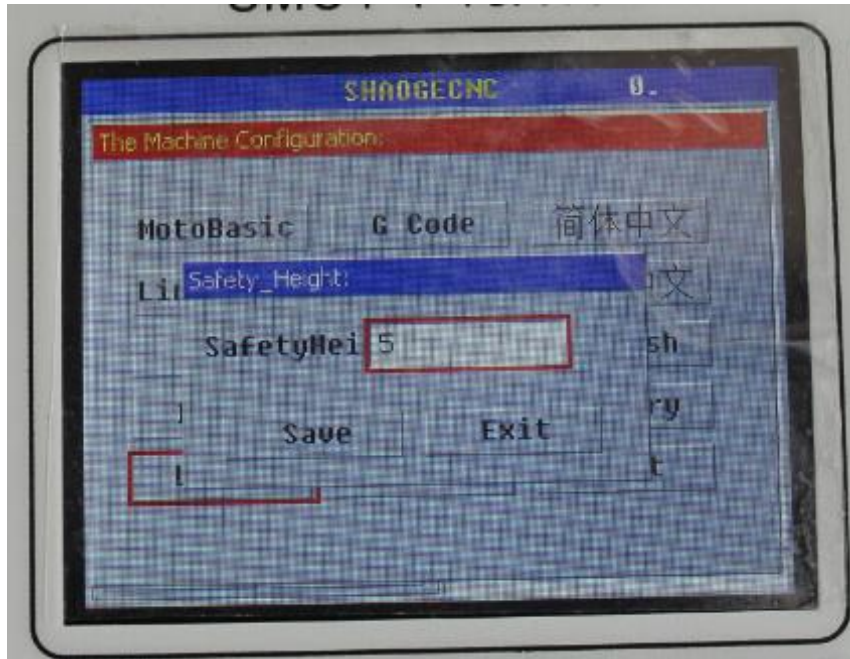
When necessary control reset Machines that can be configured as follows:



When RESET lights flashing, the corresponding pin configuration will output the corresponding level, This can be used to control the three-axis enable, or machine work tips.

**Enter safe altitude baskets**

Once entered, saved in the system

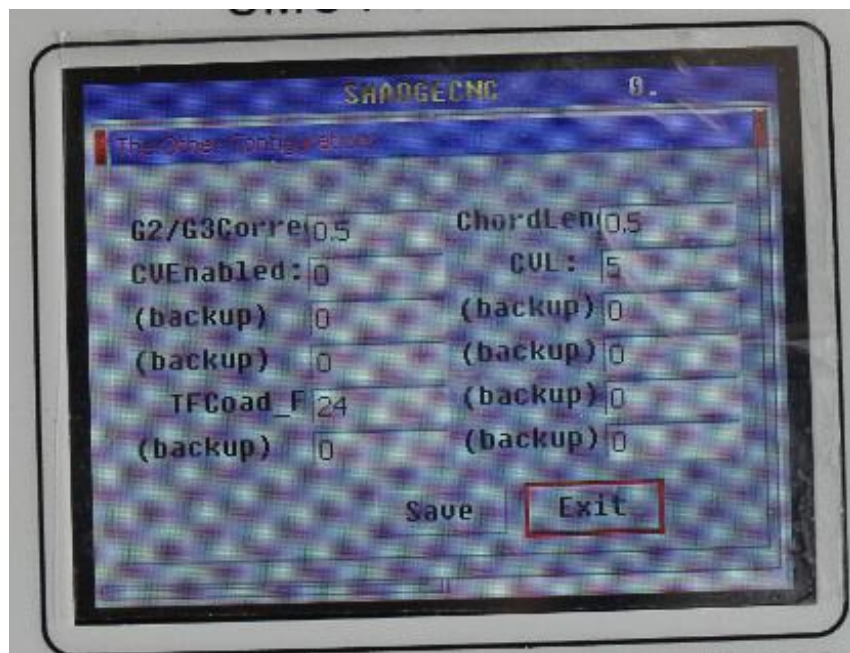


### G Script Parameters

G2/G3 tolerance refers to the input G2/G3 after manual calculations or other calculations. Because of the accuracy problems, so that circular arc center is inconsistent with the values given moment, there is a tolerance value, the system will be based on the given parameters, recalculate the best center coordinates, visible G2/G3 detailed instructions.

Chord length: curved Chord length is when generating system to fit an arc segment, See detailed description of G Script

### Advanced operating functions:



In standby (no running process) adjust speed: Press and hold the stop button (black square button), and then rotating the advanced function keys, you can adjust the speed percentage, On the main screen you can see the percentage rate (1:100-1) display.

In machining operation, direct rotating advanced function keys, you can adjust the percentage of the speed, On the main screen you can to the percentage rate (1:100-1) display.

Overspeed 133.33% run operation:

Run processing: Press the middle button of Advanced function keys, rotating advanced function keys, you can exceed 33.33% of the system to the maximum speed.

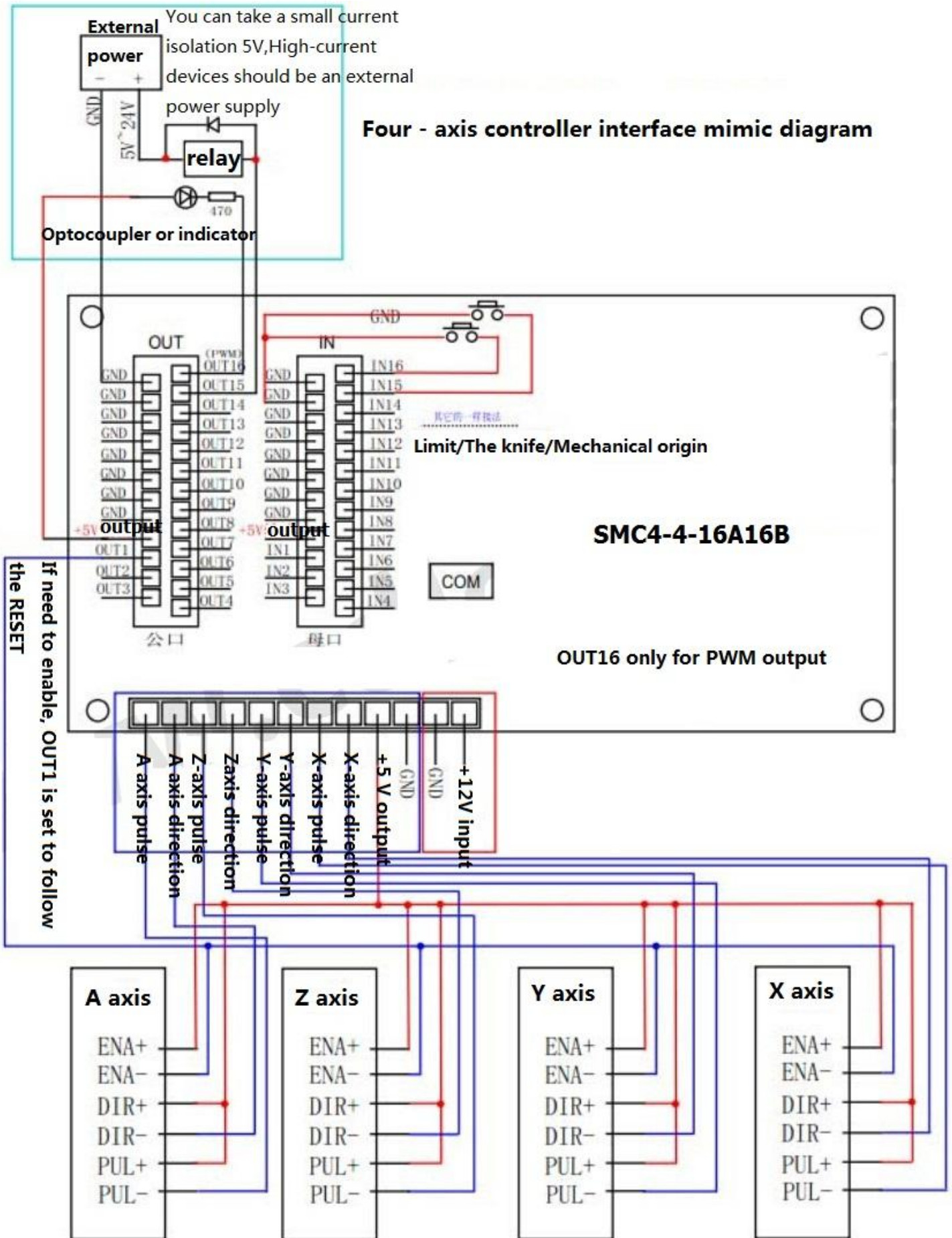
During standby under: Press and hold the stop button (black square button), press the middle button of senior function keys, rotating advanced function keys on it.

(This operation should be noted that the parameters of the system given the minimum limit, acceleration and top speed parameter variables will thus make new adjustments, the overall performance of the machine exceeds the expected value, so be careful to use!!!)

## **D.Interface mimic diagram**

Power supply is SbleDC voltage 12V, Current should be greater than 1A, the controller operates at about 300MA-800MA Power Supply.

Simulation Figure shown in "5V output" refers to the output of the power supply, Available about 500MA current to external devices to use.

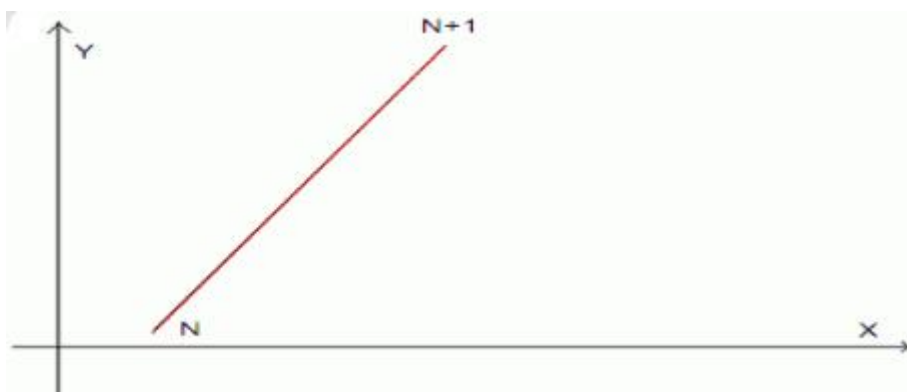


## E . G command interpretation

### G00

Format:. G0X .. Y. Z ... A

Axis rapid traverse, G0 for fast positioning tool, No machining of the workpiece. Can quickly move in several axis simultaneously, thereby producing a linear trajectory (point to point) as shown. Machine data specified maximum value for each axis rapid traverse rate of an axis running speed on this fast-moving. the moving speed of the synthesized vector speed of the two axes. In the address programmed feed rate F is invalid with G0 move quickly. The system will be run by the maximum value of each axis vector synthesis rate.



To go four cases:

G0X0Y0Z0

G0X10

G0Y10

G0X0

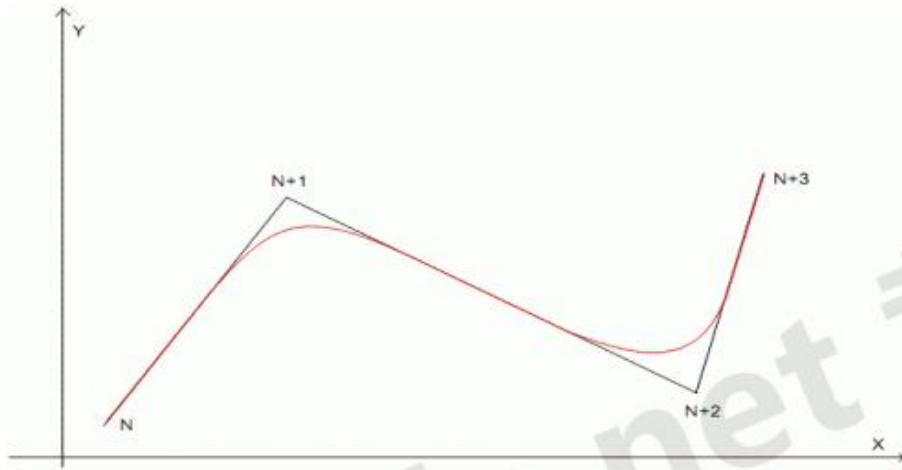
G0Y0

### G01

Format G1X .. Y.. Z.. A.. F..

The tool moves on a straight line from the starting point to the target point, Programming with F feedrate speed. All axes can be run simultaneously. G1 remain valid until they are replaced by other commands.

This controller support multi-micro multi-line forward control interpolation algorithm, That is more than one segment will be calculated tracks as Continuous interpolation algorithm, To achieve a smooth transition, Prospective method and will increase the operating speed as much as possible.



Red trace is the actual running tracks, F is the processing speed

Painting Quartet Case:

G0X0Y0Z0

X10F1200

Y10

X0

Y0

**G02 G03**

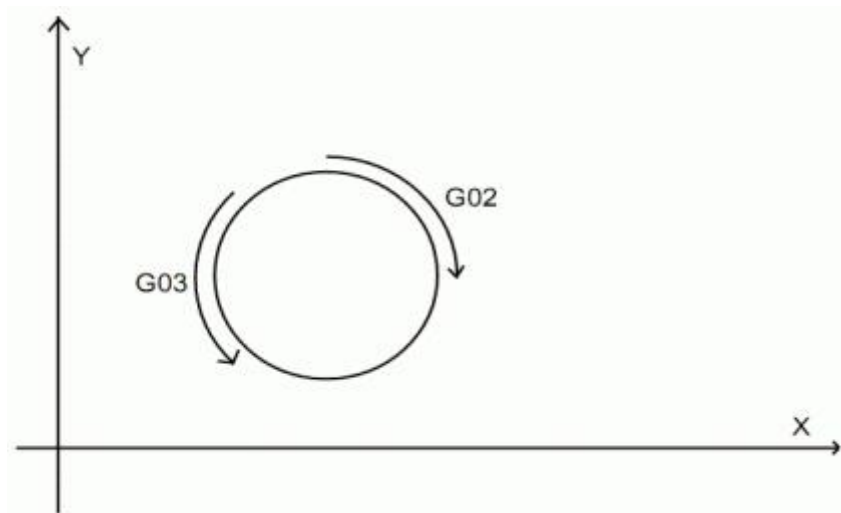
Format (1) G02X .. Y.. Z.. R.. F.. (Radius method)

(2) G02X .. Y.. Z.. I.. J.. K.. F (circle center method)

Format (1) G03X .. Y.. Z.. R.. F.. (Radius method)

(2) G03X .. Y.. Z.. I.. J.. K.. F (circle center method)

G02 clockwise circle    G03 counterclockwise circle



G17 (X, Y) coordinate plane (plane default)

G18 (X, Z) coordinate plane

G19 (Y,Z) coordinate plane

**circle center method:**

G02 (G03) X.. Y.. Z.. I.. J.. K.. F

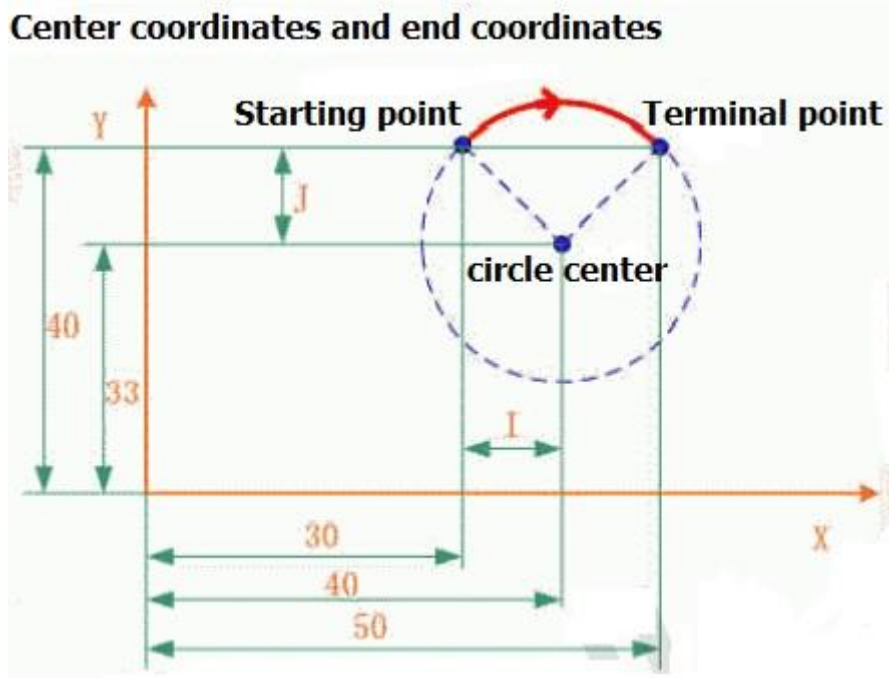
X. Y. Z represents Terminal point coordinate, F processing speed

I represents projection of the arc starting point to circle center distance in the X-axis

J represents projection of the arc starting point to circle center distance in the Y-axis

K represents projection of the arc starting point to circle center distance in the Z-axis

L, J, K direction is corresponding to the negative direction of the XYZ



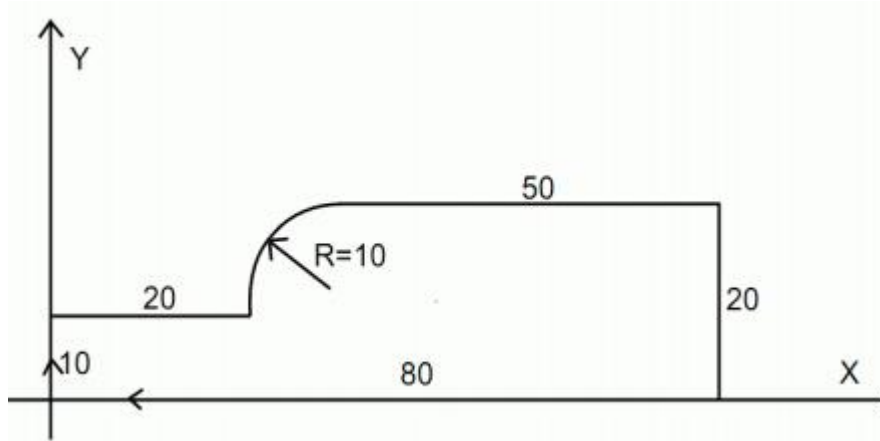
Legitimacy of the parameter (in XY plane):

circle center method can be obtained directly radius  $R = \sqrt{i^2 + j^2}$ , If the length of the line start and end points of the arc is greater than  $2R$  is impossible to go wrong prompt.

When the above conditions are satisfied, the system will recalculate the center coordinates of the most reasonable, When it has some deviation with given center coordinates actually, Called super difference, If this deviation value is greater than the system given, it will prompt an error, This super difference can be set in the system, Facilitate more rapid input parameters.

(Note: The difference between the actual center of the arc can constitute

And input circle center called super difference, This difference can be super-max settings, you can tolerate a wider parameter input limit)



Case:

G0X0Y0Z0

G1Z-1F1200

Y10

X20

G02X30Y20I10J0

G1X80

Y0

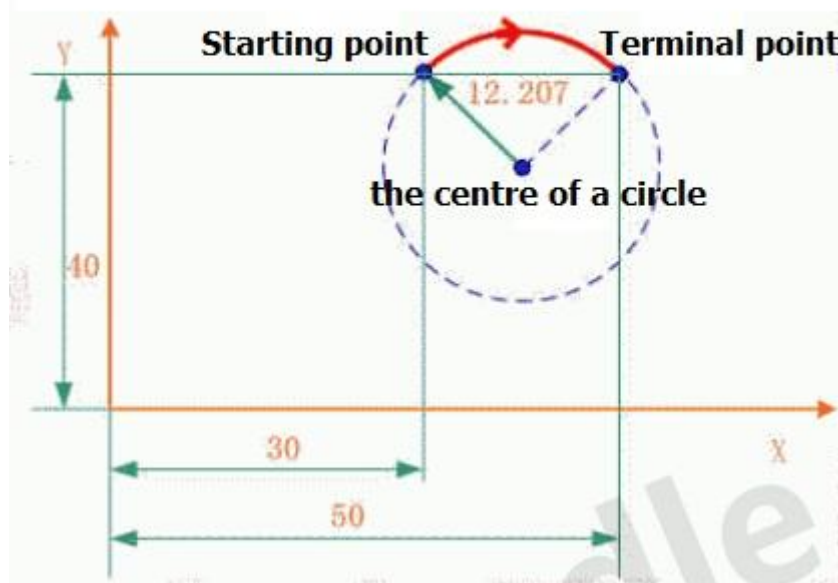
X0

G0X0Y0Z5

**Radius method:**

G02 (G03) X.. Y.. Z.. R.. F..

**Radius and end point**



X, Y, Z Terminal point coordinates, F processing speed

R represents the radius of the arc

F processing speed

In the case of a known start and end points of the arc with a radius of programming, By geometric mapping will be two arcs, a large arc and a small arc, in order not to generate ambiguities provisions  $R > 0$  is a small arc,  $R < 0$  is great arc.

For full circle, because the starting point coincides with Terminal point, with R programming, there will be countless solution, can not define the center position, it can only be programmed with the center coordinates method.

case :

G0X0Y0Z0

G1Z-1F1200

Y10

X20

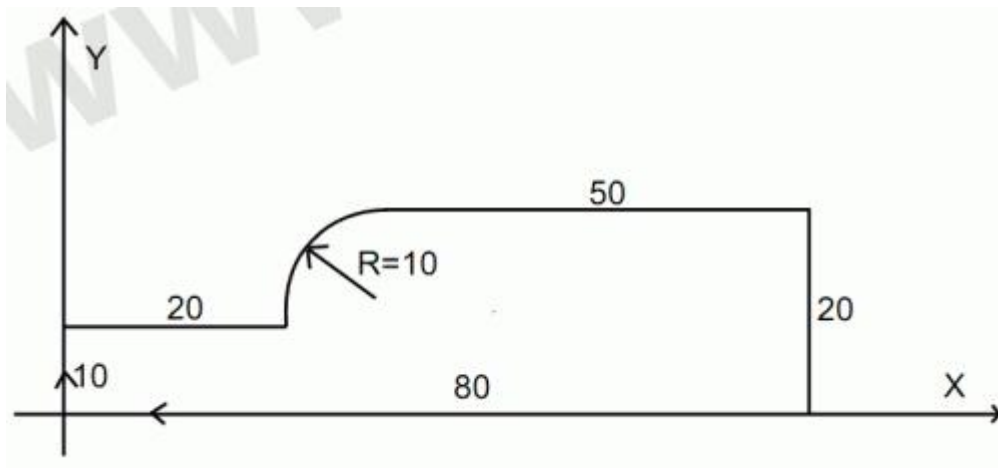
G02X30Y20R10

G1X80

Y0

X0

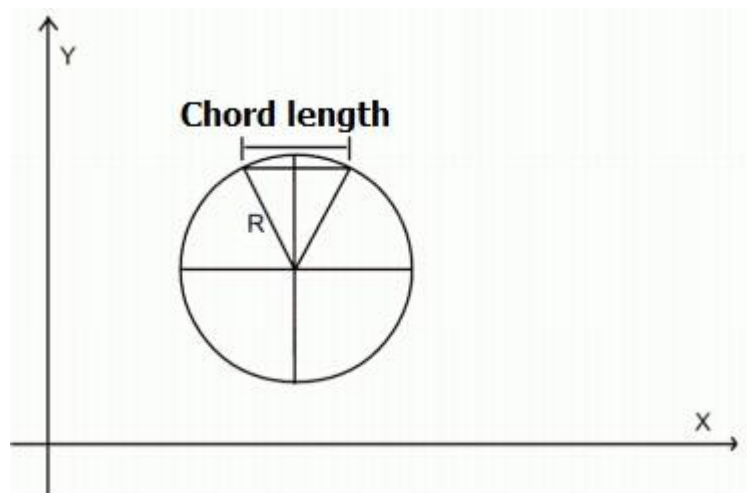
G0X0Y0Z5



Chord length:

After the system calculates the combined resistance parameter, Given G02, G03 proposed synthesis and decomposition micro segment, This micro multi-segment shaped scale is Chord length, This length can be set in the system, Reference value (0.1mm-5mm),

Note: Due to system has prospective multi-micro multi-line interpolation calculation, and therefore Chord length is undesirable too short, when it is necessary to be too short, and processing speed must be somewhat lowered! !



G17 (X, Y) coordinate plane (plane default)

G18 (X, Z) coordinate plane

G19 (Y, Z) coordinate plane

G04 (pause, delay)

Format: G04P ..

Between the two blocks by inserting a G4 block, You can make the given time of interrupt the machining P suffix to be milliseconds, a minimum of 500ms + P \*

Case: (delay 1 second)

G0X0Y0

G1Z-1F1200

G1X20Y20

G04P1000

G1X40Y40

G0Z5

G0X0Y0

**G90 (default): Absolute dimensions**

**G91: Incremental dimension**

G90 and G91 commands corresponding to the absolute position data input and incremental position data input.

G90 represents the coordinate dimension of coordinates target point, G91 represents the displacement to be run. G90/G91 applies to all axes. These instructions do not decide to end position trajectory, Trajectory is determined by the other G group G function commands (G0, G1, G2, G3 ...). After the program starts G90 applies to all axes and remains active until later in the block have appeared G91.

Specific G commands

G54 (coordinate system control)

Format: G54P .. (coordinates irreversible, please carefully Operation)

Coordinate system axes are cleared

the X-axis is cleared: G541

the Y-axis is cleared: G542

the Z-axis is cleared: G543

the A-axis is cleared: G544

On XYZ axes simultaneously cleared: G54P \* (except 1,2,3,4,for any value , not fill P also)

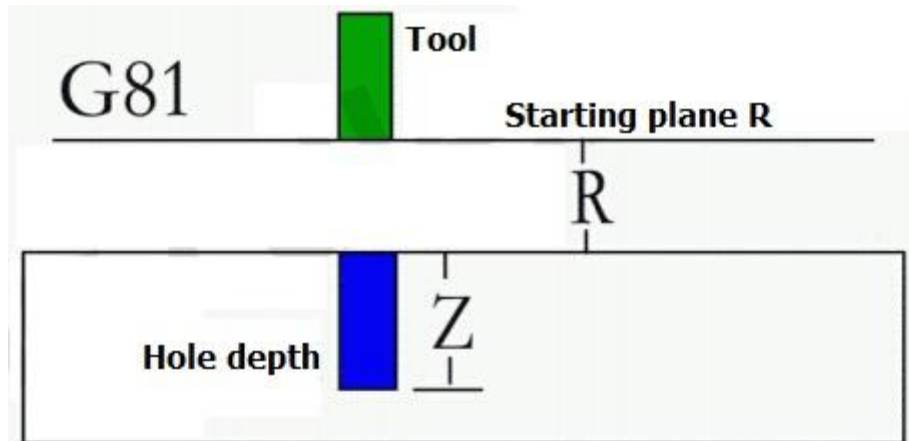
G81: (drill instruction)

Format: G81X .. Y.. Z.. R.. F..

X.Y represent end coordinates, Z represents the depth of machining

F processing speed

R represent operating plane (safe altitude) at the beginning, represent and Z Terminal point after returned



Case: (coordinates (20.0), (20.20), (0.20), (0,0) four drill holes 5mm in depth, the two safety plane, a speed of 200)

G0X0Y0Z5

G81X20Y0R2Z-5F200

G81X20Y20R2Z-5F200

G81X0Y20R2Z-5F200

G81X0Y0R2Z-5F200

G0X0Y0Z5

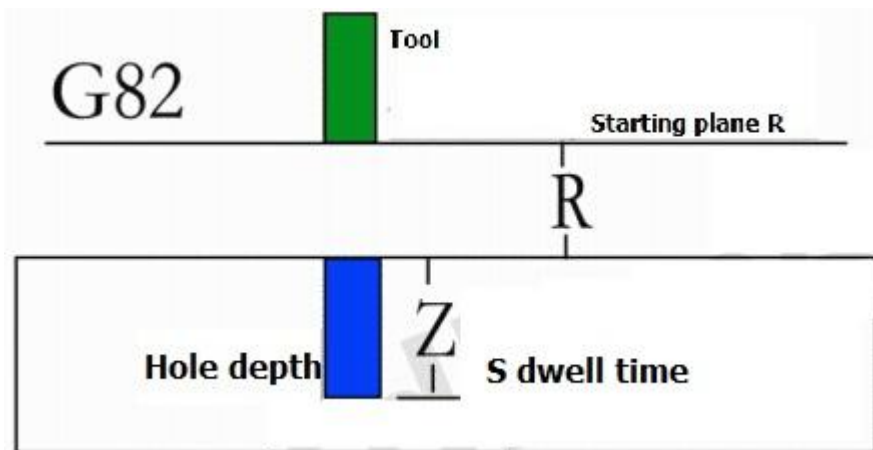
G82: (drilling instruction)

Format: G83X .. Y.. Z.. R.. P.. F....

X, Y represent Terminal point coordinates,Z represents the depth of machining, S represents dwell time at the hole bottom.

F processing speed

R represent theoperating plane of the beginning,and represent Z terminal point after returned.



Case: (coordinates (20.0), (20.20), (0.20), (0,0) four drill holes 5mm in depth, the two safety plane, and one second stay at the hole bottom, a speed of 200)

G0X0Y0Z5

G82X20Y0R2Z-5P1000F200

G82X20Y20R2Z-5P1000F200

G82X0Y20R2Z-5P1000F200

G82X0Y0R2Z-5P1000F200

G0X0Y0Z5

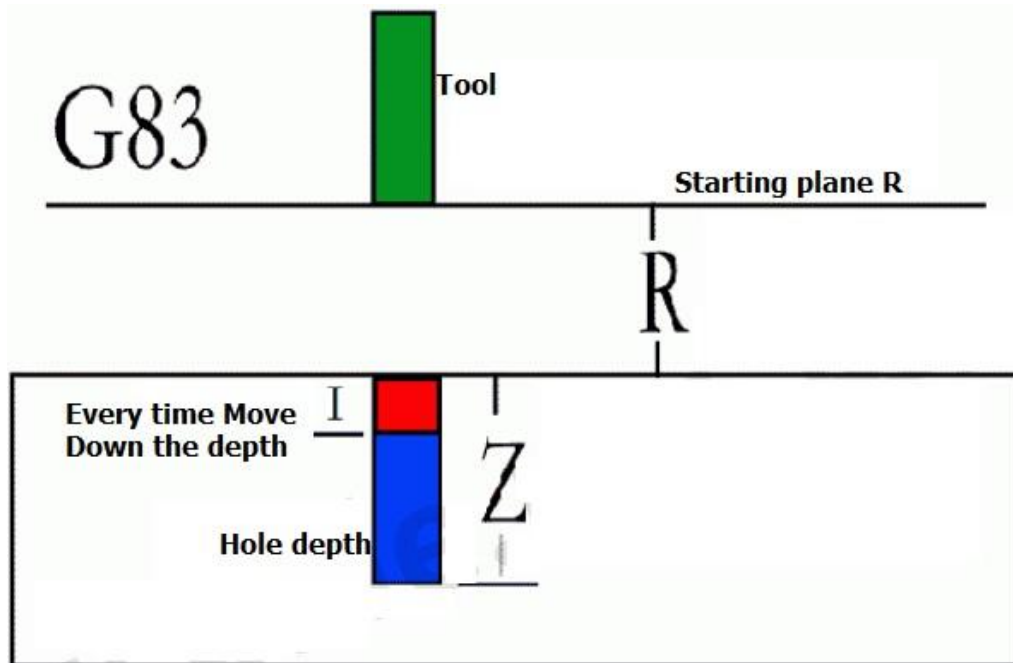
**G83: (canned cycle drilling instruction)**

Format: G83X .. Y. Z. R. I. F....

X, Y represent end coordinates, Z represents the depth of processing, I represents the displacement of each fall, it will be cut back action When processed to I depth.

F processing speed

R represents the beginning of the start plane and said Z end after returned



Case: (coordinates (20.0), (20.20), (0.20), (0,0) four drill holes 5mm in depth, the two safety plane,  
G0X0Y0Z5

G83X20Y0R2Z-5I1F200

G83X20Y20R2Z-5I1F200

G83X0Y20R2Z-5I1F200

G83X0Y0R2Z-5I1F200

G0X0Y0Z5

**specific M instructions:**

The controllers do some advanced control with specific instructions M

M47 return to the first line to start again, can be added at the end of the program cycle not to stop.

Output Control M command (M1 \*\*, M2 \*\*)

M101 corresponds OUT\_1 Output High Level (artificially high, Facilitate different voltage connect pull-up resistor)

M102 corresponds OUT\_2 Output High Level (artificially high, Facilitate different voltage connect pull-up resistor)

M103 corresponds OUT\_3 Output High Level (artificially high, Facilitate different voltage connect pull-up resistor)

M104 corresponds OUT\_4 Output High Level (artificially high, Facilitate different voltage connect pull-up resistor)

M105 corresponds OUT\_5 Output High Level (artificially high, Facilitate different voltage connect pull-up resistor)

M106 corresponds OUT\_6 Output High Level (artificially high, Facilitate different voltage connect pull-up resistor)

- M107 corresponds OUT\_7 Output High Level (artificially high, Facilitate different voltage connect pull-up resistor)
- M108 corresponds OUT\_8 Output High Level (artificially high, Facilitate different voltage connect pull-up resistor)
- M109 corresponds OUT\_9 Output High Level (artificially high, Facilitate different voltage connect pull-up resistor)
- M110 corresponds OUT\_10 Output High Level (artificially high, Facilitate different voltage connect pull-up resistor)
- M111 corresponds OUT\_11 Output High Level (artificially high, Facilitate different voltage connect pull-up resistor)
- M112 corresponds OUT\_12 Output High Level (artificially high, Facilitate different voltage connect pull-up resistor)
- M113 corresponds OUT\_13 Output High Level (artificially high, Facilitate different voltage connect pull-up resistor)
- M114 corresponds OUT\_14 Output High Level (artificially high, Facilitate different voltage connect pull-up resistor)
- M115 corresponds OUT\_15 Output High Level (artificially high, Facilitate different voltage connect pull-up resistor)
- M116 Because logic easy to confuse, so give up on the OUT\_16 Output Control
  
- M201 corresponding OUT\_1 output low level (perfusion 500ma to ground)
- M202 corresponding OUT\_2 output low level (perfusion 500ma to ground)
- M203 corresponding OUT\_3 output low level (perfusion 500ma to ground)
- M204 corresponding OUT\_4 output low level (perfusion 500ma to ground)
- M205 corresponding OUT\_5 output low level (perfusion 500ma to ground)
- M206 corresponding OUT\_6 output low level (perfusion 500ma to ground)
- M207 corresponding OUT\_7 output low level (perfusion 500ma to ground)
- M208 corresponding OUT\_8 output low level (perfusion 500ma to ground)
- M209 corresponding OUT\_9 output low level (perfusion 500ma to ground)
- M210 corresponding OUT\_10 output low level (perfusion 500ma to ground)
- M211 corresponding OUT\_11 output low level (perfusion 500ma to ground)
- M212 corresponding OUT\_12 output low level (perfusion 500ma to ground)
- M213 corresponding OUT\_13 output low level (perfusion 500ma to ground)
- M214 corresponding OUT\_14 output low level (perfusion 500ma to ground)
- M215 corresponding OUT\_15 output low level (perfusion 500ma to ground)
- M216 Because logic easy to confuse, so give up on the OUT\_16 Output Control



Enter the judgment M command (M3 \*\*, M4 \*\*)

M301 corresponding the input terminal INTPU\_1 Judgment if it is low level execute the next line, otherwise go on waiting

M302 corresponding the input terminal INTPU\_2 Judgment if it is low level execute the next line, otherwise go on waiting

M303 corresponding the input terminal INTPU\_3 Judgment if it is low level execute the next line, otherwise go on waiting

M304 corresponding the input terminal INTPU\_4 Judgment if it is low level execute the next line, otherwise go on waiting

M305 corresponding the input terminal INTPU\_5 Judgment if it is low level execute the next line, otherwise go on waiting

M306 corresponding the input terminal INTPU\_6 Judgment if it is low level execute the next line, otherwise go on waiting

M307 corresponding the input terminal INTPU\_7 Judgment if it is low level execute the next line, otherwise go on waiting

M308 corresponding the input terminal INTPU\_8 Judgment if it is low level execute the next line, otherwise go on waiting

M309 corresponding the input terminal INTPU\_9 Judgment if it is low level execute the next line, otherwise go on waiting

M310 corresponding the input terminal INTPU\_10 Judgment if it is low level execute the next line, otherwise go on waiting

M311 corresponding the input terminal INTPU\_11 Judgment if it is low level execute the next line, otherwise go on waiting

M312 corresponding the input terminal INTPU\_12 Judgment if it is low level execute the next line, otherwise go on waiting

M313 corresponding the input terminal INTPU\_13 Judgment if it is low level execute the next line, otherwise go on waiting

M314 corresponding the input terminal INTPU\_14 Judgment if it is low level execute the next line, otherwise go on waiting

M315 corresponding the input terminal INTPU\_15 Judgment if it is low level execute the next line, otherwise go on waiting

M316 corresponding the input terminal INTPU\_16 Judgment if it is low level execute the next line, otherwise go on waiting

M401 corresponding the input terminal INTPU\_1 Judgment if it is low level execute the next line, otherwise go on waiting

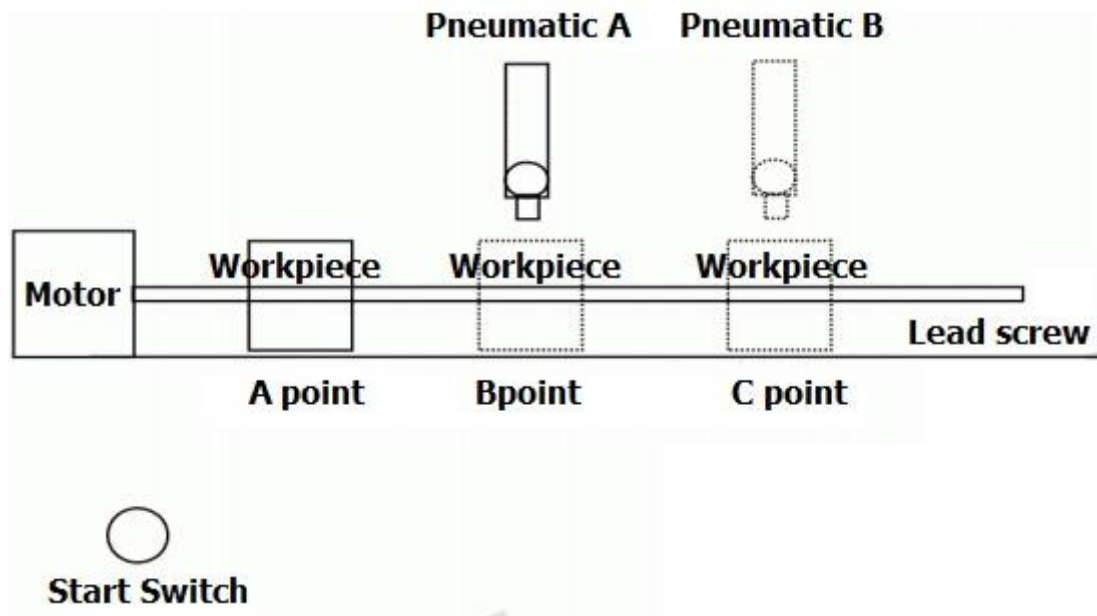
M402 corresponding the input terminal INTPU\_2 Judgment if it is low level execute the next line, otherwise go on waiting

- M403 corresponding the input terminal INTPU\_3 Judgment if it is low level execute the next line, otherwise go on waiting
- M404 corresponding the input terminal INTPU\_4 Judgment if it is low level execute the next line, otherwise go on waiting
- M405 corresponding the input terminal INTPU\_5 Judgment if it is low level execute the next line, otherwise go on waiting
- M406 corresponding the input terminal INTPU\_6 Judgment if it is low level execute the next line, otherwise go on waiting
- M407 corresponding the input terminal INTPU\_7 Judgment if it is low level execute the next line, otherwise go on waiting
- M408 corresponding the input terminal INTPU\_8 Judgment if it is low level execute the next line, otherwise go on waiting
- M409 corresponding the input terminal INTPU\_9 Judgment if it is low level execute the next line, otherwise go on waiting
- M410 corresponding the input terminal INTPU\_10 Judgment if it is low level execute the next line, otherwise go on waiting
- M411 corresponding the input terminal INTPU\_11 Judgment if it is low level execute the next line, otherwise go on waiting
- M412 corresponding the input terminal INTPU\_12 Judgment if it is low level execute the next line, otherwise go on waiting
- M413 corresponding the input terminal INTPU\_13 Judgment if it is low level execute the next line, otherwise go on waiting
- M414 corresponding the input terminal INTPU\_14 Judgment if it is low level execute the next line, otherwise go on waiting
- M415 corresponding the input terminal INTPU\_15 Judgment if it is low level execute the next line, otherwise go on waiting
- M416 corresponding the input terminal INTPU\_16 Judgment if it is low level execute the next line, otherwise go on waiting

### **G, M instruction combinations Case**

Project goal: to start the switch after triggered,X-axis control operation of the mobile speeds of 600, To specify the location of the first point A,output an action to pneumatic A,2 seconds,then semi-closed return,1 seconds, then move the operating speed of 600 to point B,Then output a move to the Pneumatic B,2 seconds,then closing the return, 1 seconds, then move the operating speed of 1200 to return to point A and wait for the start switch triggered .....

As shown in Figure



A position of the origin point, B point 500MM, C point 1000MM

connect the X-axis control all circuits, An input switch connected to the input port 1 as the start button, and connect the two-way Pneumatic units A, B to the output port 1,2, A connect 1, B connect 2.

Program instructions are as follows:

G1X500F600 (the workpiece is moved to the 500 position)

M101 (Open Pneumatic A)

G4P2000 (delay 2 seconds)

M201 (Close Pneumatic A return)

G4P1000 (delay 1 second)

G1X1000F600 (the workpiece is moved to the 1000 position)

M102 (Open Pneumatic B)

G4P2000 (delay 2 seconds)

M202 (Close Pneumatic B returns)

G4P1000 (delay 1 second)

G1X0F1200 (the workpiece is moved to the 0 position)

M301 (wait for the start button triggered)

M47 (back to the first line to restart Note: The last line of the last to join the carriage return)

(Carriage return or empty)

**The controller reliefs carved out of the picture:**

















