

User Manual For 4060 CNC Router

Technical data

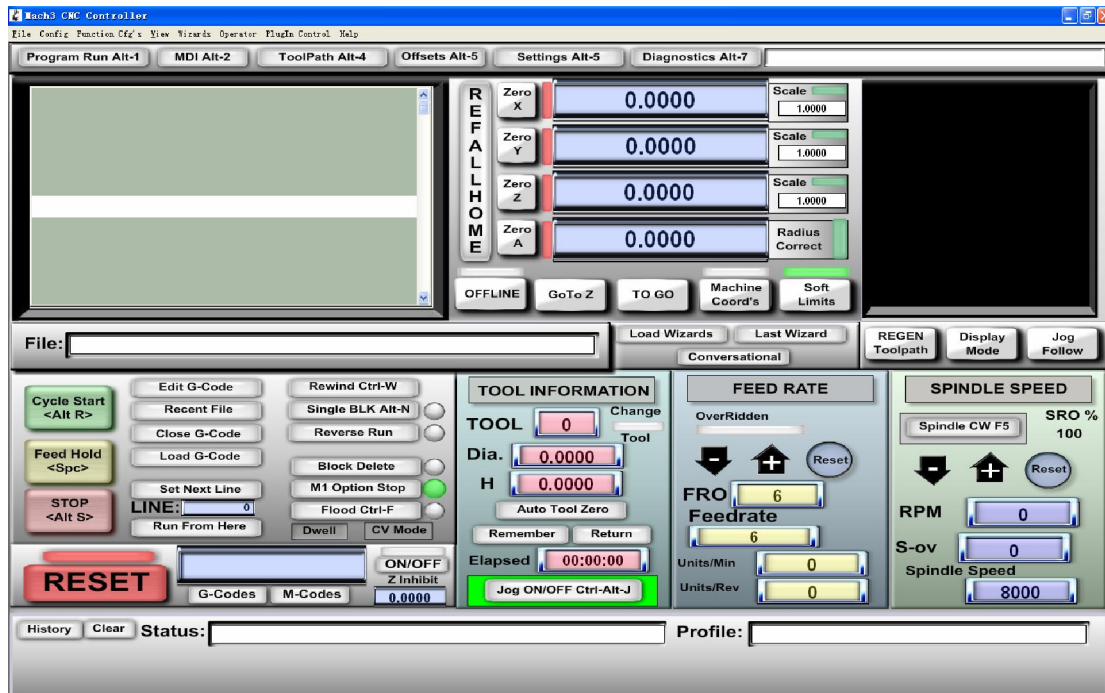
Dimensions	
Depth(Y)[mm]	900
Width(X)[mm]	690
Height(Z)[mm]	520
Total weight [kg]	45
Work area	
X[mm]	480
Y[mm]	840
Z[mm]	90(The Z axis bottom and workbench spacing)
Work travel	
X[mm]	400
Y[mm]	600
Z[mm]	60
Water-cooled spindle	
consumption	AC220V/800W
frequency	400Hz
Speed[rpm]	0~24000
Clamping diameter	6mm , 6.35mm , 4mm , 3.175mm , 3mm (Standard configuration 6mm , 3.175mm)
Cooling way	water circulation cooling
Transmission unit	
X,Y,Z	Three axis is 1605 ball screw
Sliding unit	
X	20
Y	20
Z	13
feeding speed[mm/min]	3000
Carving speed[mm/min]	300~3000
repeat location accuracy[mm]	0.03

Water-cooling spindle



Note: Water-cooling spindle must the water pump outlet pipe after open water to activate, otherwise might burn spindle

Mach3 configuration



Configuration of parallel port parameter

1. Click **PORT & PIN** sub-menu of **config** menu. Please refer to Image.1

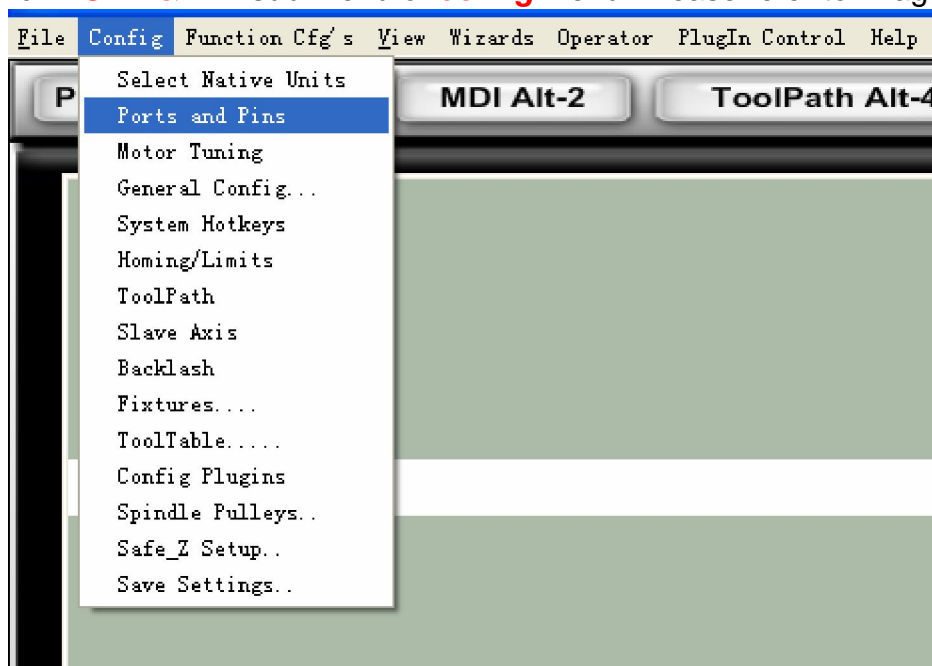


Image 1

2. Use LPT1. Enable the port as image 2

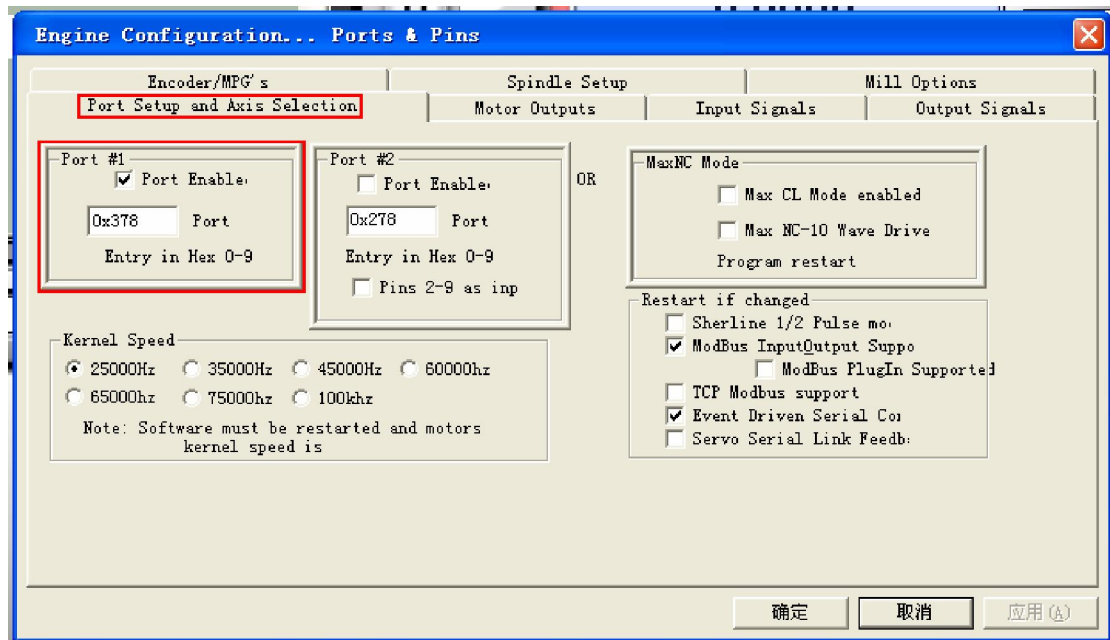


Image 2

Remark:

We usually choose Port1, 0x378 to control. but for PCI parallel card or special situation, Please set according to the relative property of device manager. If there is no print port of your computer:

- (1) for Laptops. You can choose PCMCIA to LPT card.
- (2) for Deaktops. You can choose PCI or ISA to LPT card.

Note: LPT transfered by USB interface can not be used to control the machine.

3. Define the configuration *Scripting of PORT & PIN*, please refer to *image3,4,5*

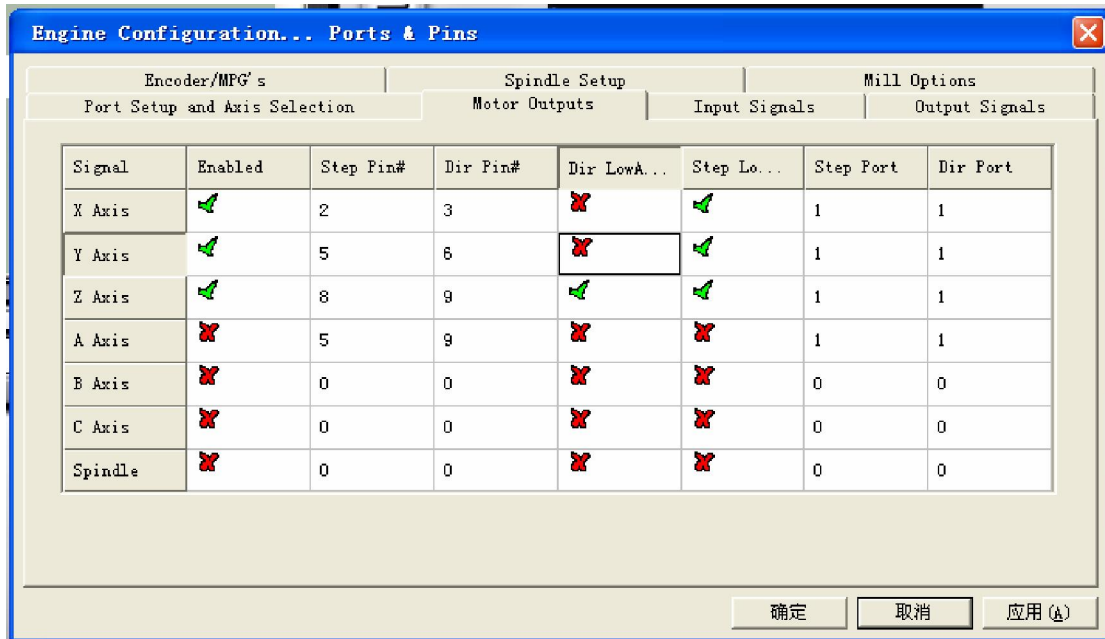


Image 3

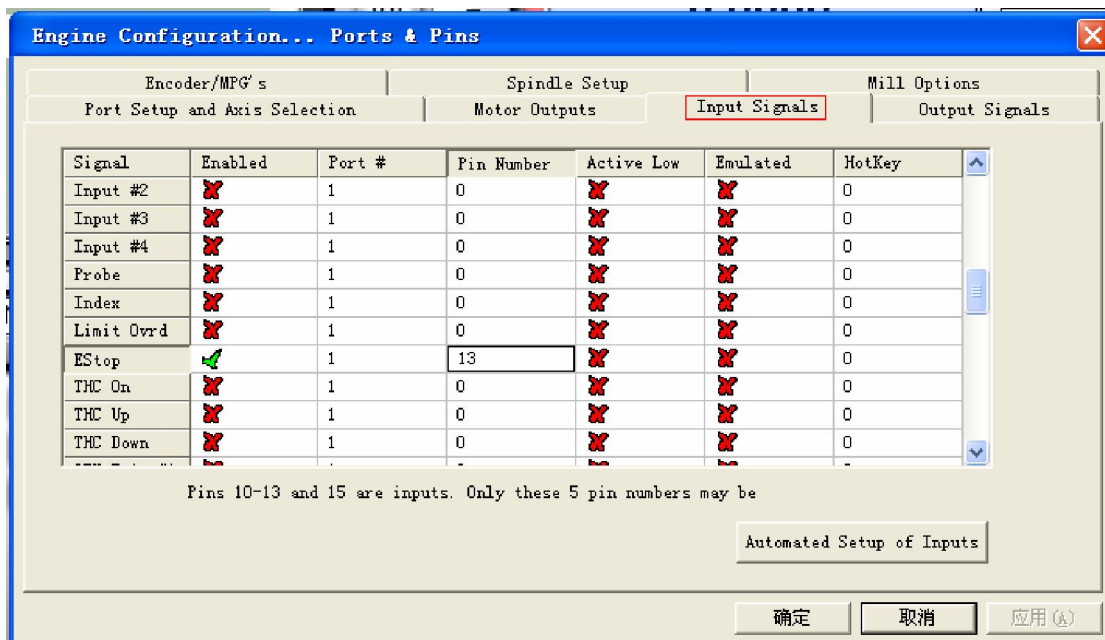


Image 4

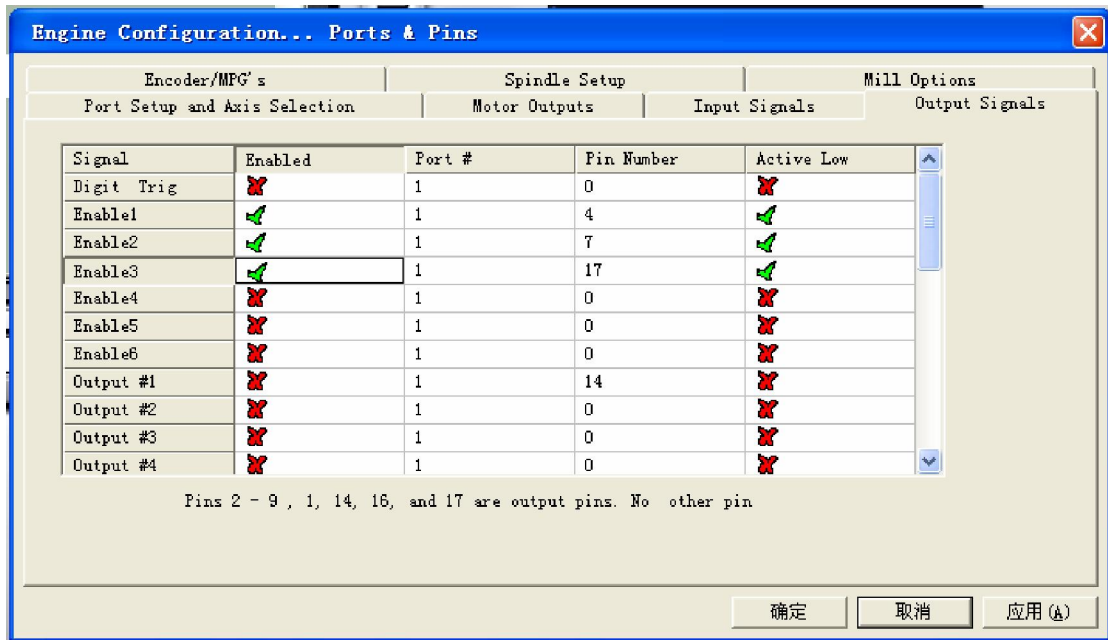
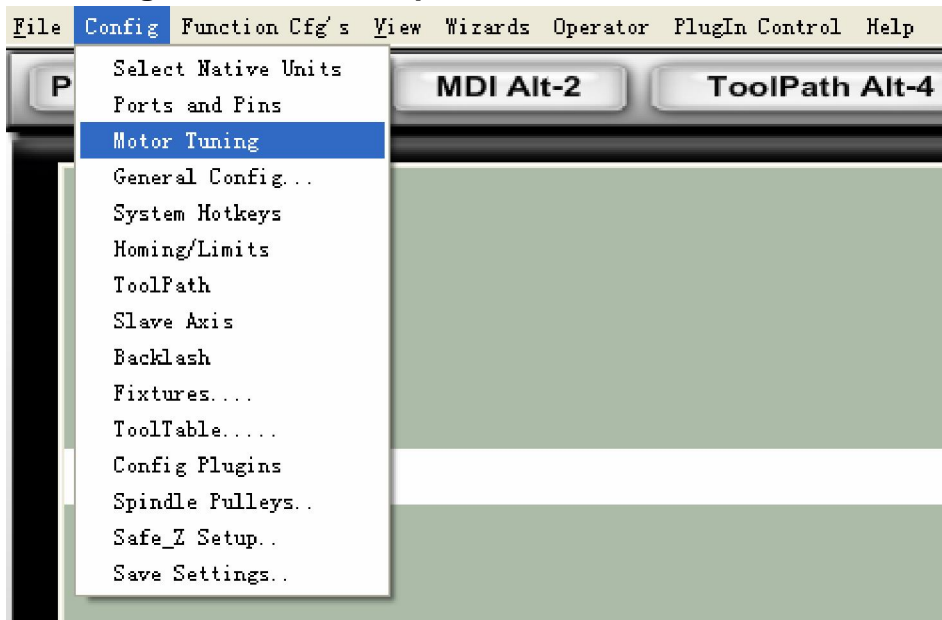


Image 5

二. Configuration of motor parameter



Modify the motor parameter of all X、 Y、 Z aixs. Each axis parameter Settings, Must press the **SAVE AXIS SETTINGS** button to be saved

Please refer to image 6

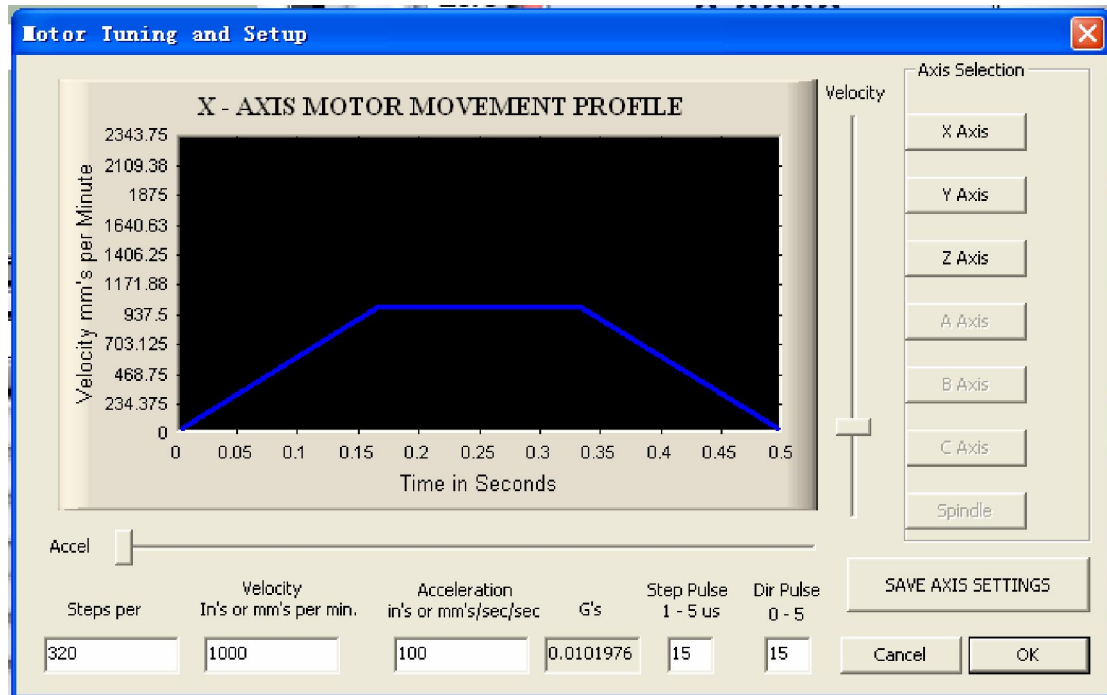


Image 6

三、 Operate the machine

1.You may see the red button **RESET** flashing. Click **RESET** to stop the flashing



2.Use the system shortcuts to move the axis

Keyboard	Function
LeftArrow Key	X--
RightArrow Key	X++
UpArrow Key	Y--
DownArrow Key	Y++
PageUpKey	Z++
PageDownKey	Z--
EscKey	Emergency Stop