

T series software instructions

I. Connect the debugging cable

The specific connection process is shown in Figure 1.

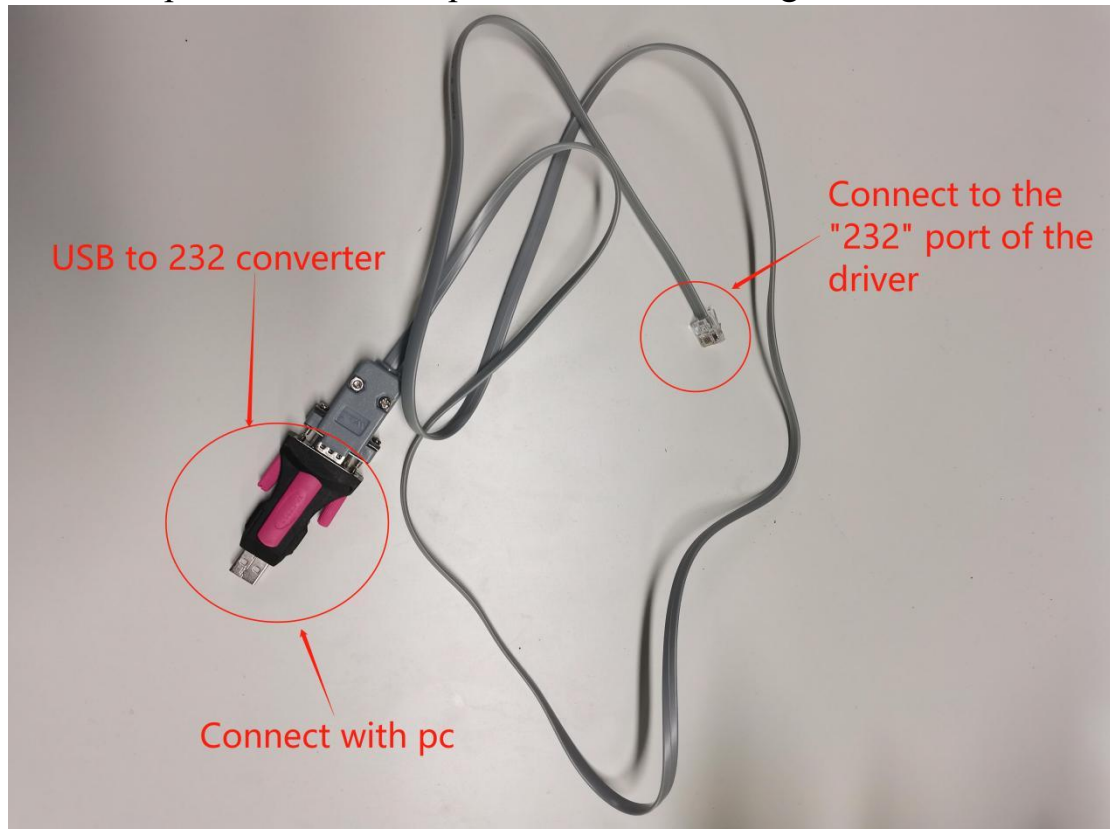



Figure 1

II. Install the serial driver

 HL340 CH341 USB to serial port line driver (support 64-bit Win7)

III. Check the port

(1) Method 1

- Step 1: Right click on "My Computer".
- Step 2: Select and click "Administration".
- Step 3: Click "Device Manager".
- Step 4: Click "Port".

(2) Method 2

- Step 1: Right click on "My Computer".

Step 2: Select and click “Property”.

Step 3: Click “Device Manager”.

Step 4: Click “Port”.

IV. Apply debugging software

(1) As shown in figure 2. Double click to open the debugging software

电脑 > 软件 (D:) > 各种文档 > 调试软件 > RTConfig-1.21.7.14

名称	修改日期	类型	大小
XmlFile	2021/7/14 9:11	文件夹	
RtConfig.ini	2021/8/30 17:36	配置设置	1 KB
RTConfigurator.application	2021/7/14 9:10	Application Man...	2 KB
RTConfigurator.exe	2021/7/14 9:10	应用程序	524 KB
RTConfigurator.exe.config	2021/1/18 16:22	CONFIG 文件	1 KB
RTConfigurator.exe.manifest	2021/7/14 9:10	MANIFEST 文件	19 KB
RTConfigurator.pdb	2021/1/21 11:12	PDB 文件	380 KB
ZedGraph.dll	2008/12/12 16:01	应用程序扩展	300 KB
ZedGraph.xml	2008/12/12 16:01	XML 文档	1,458 KB

Figure 2

(2) Type selection

As shown in Fig. 3, select the corresponding type.

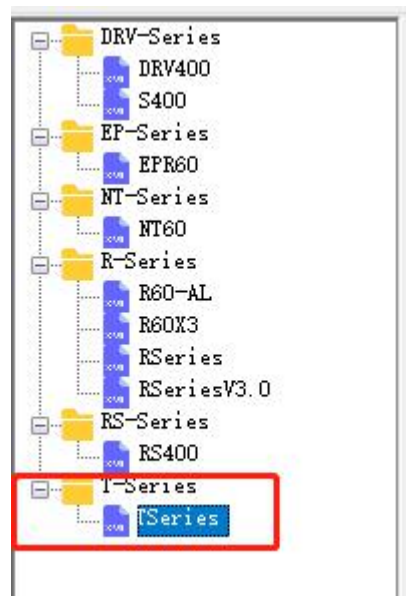


Figure 3

(3) Communication Settings

As shown in Figure 4, step ①: Click "Communication Settings"; step ②: select "serial port", This serial port is consistent with the port; Step ③: Click "Open Serial Port".

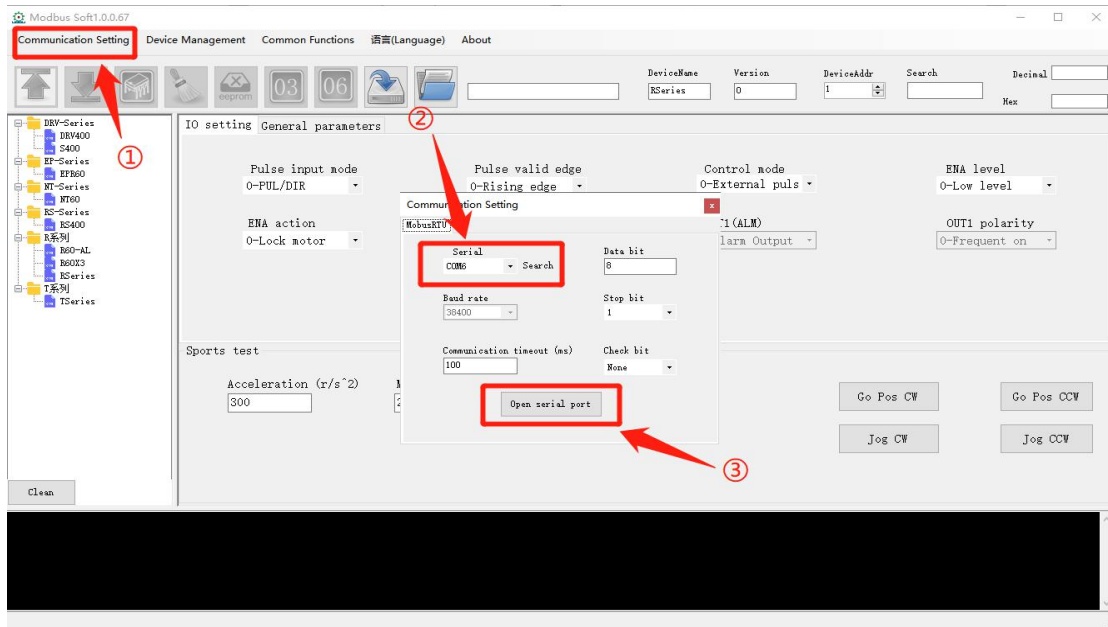


Figure 4

(4) Upload parameters

As shown in Fig.5, when the selection is finished, click here to upload data.



Figure 5

(5) IO setting

As shown in Fig.6, step ①: click "IO Setting"; Step ②: Users can choose "Pulse input mode" according to their own needs.

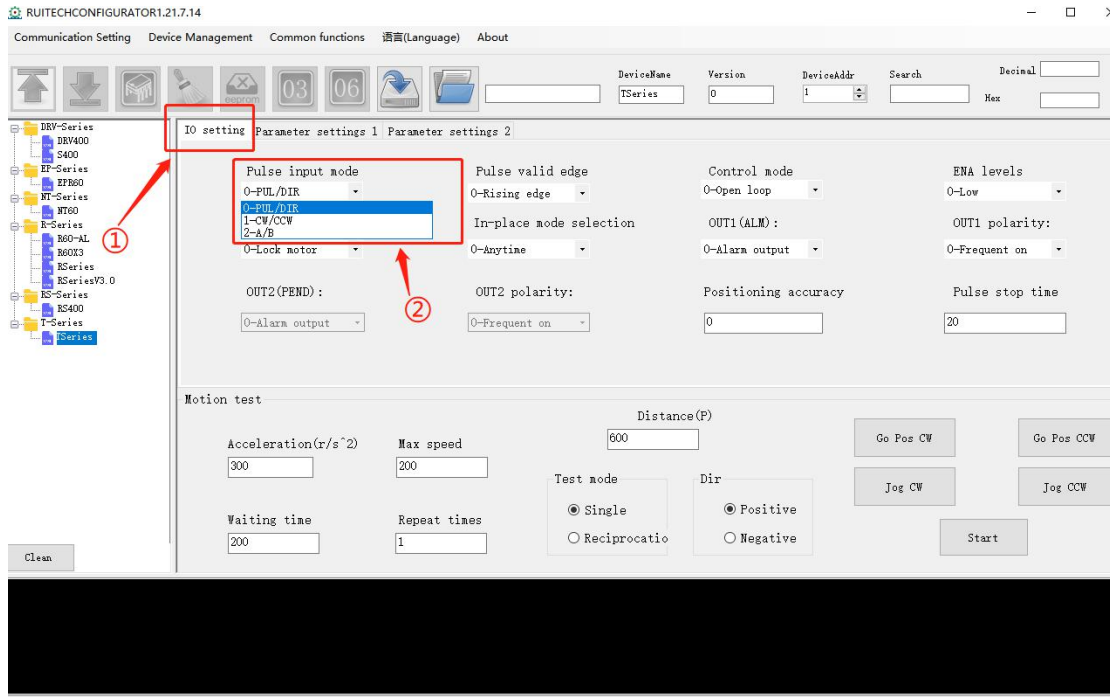


Figure 6

As shown in Fig. 7, step ①: click "IO Setting"; Step ②: Users can select "pulse valid edge" according to their own needs.

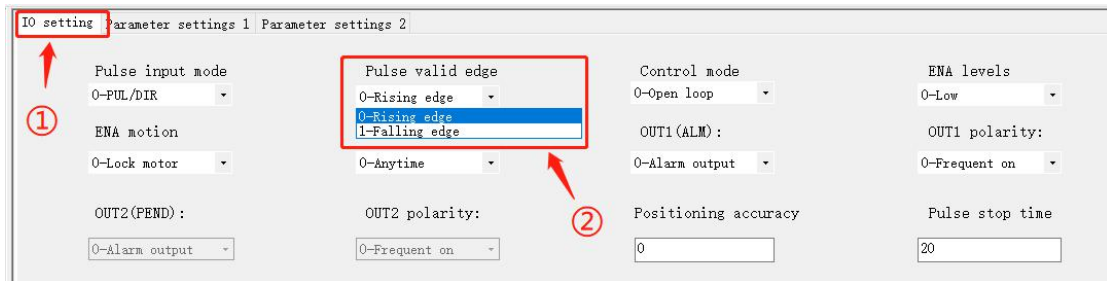


Figure 7

(6) Motion test

As shown in Fig. 8, "Sports Test" is an internal test function, through which the motor can be turned.

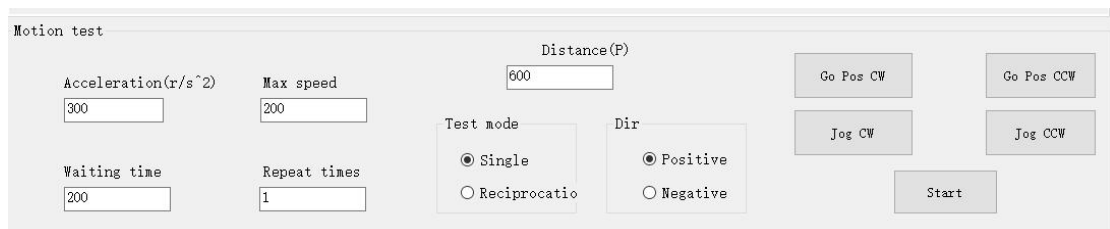


Figure 8

(7) Save the parameters

Click here to save to drive after changing the parameters, as shown in Figure 10.



Figure 9

(8) Monitor encoder feedback error

The steps of monitoring encoder feedback error are shown in Figure 10.

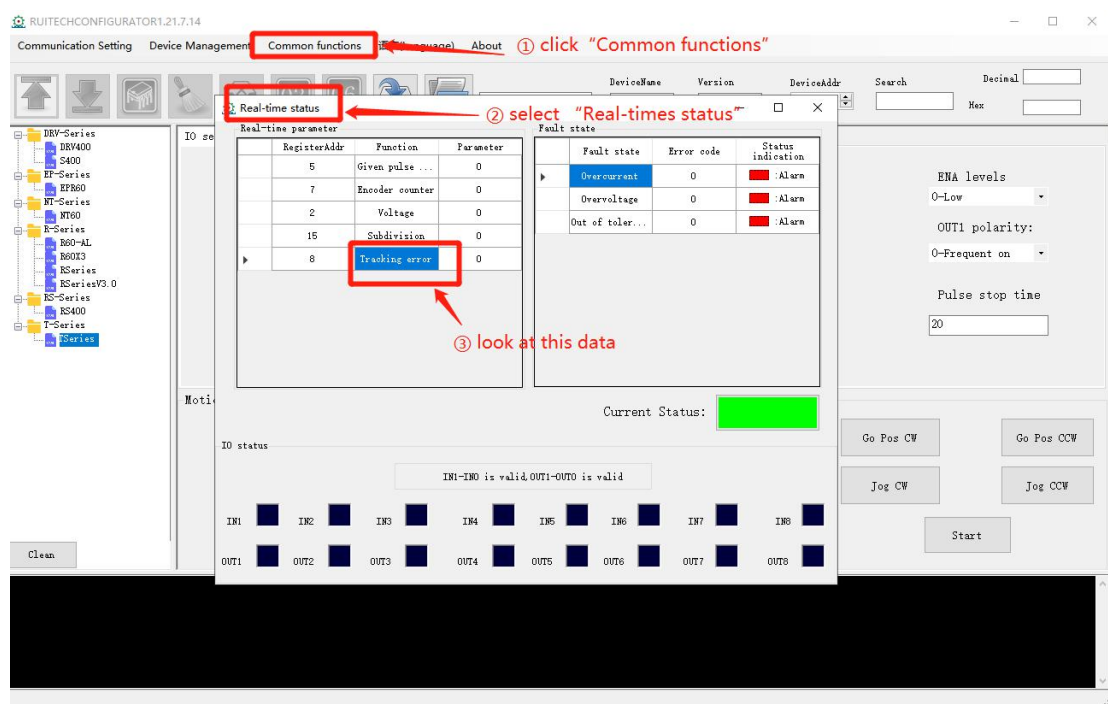


Figure 10