



1. Computer (Host) Configuration

Step 1: Use an Ethernet Cable to connect the DDCSE controller and the computer;

Step 2: Go to Setting -> Network and Internet -> Network Connections in computer.

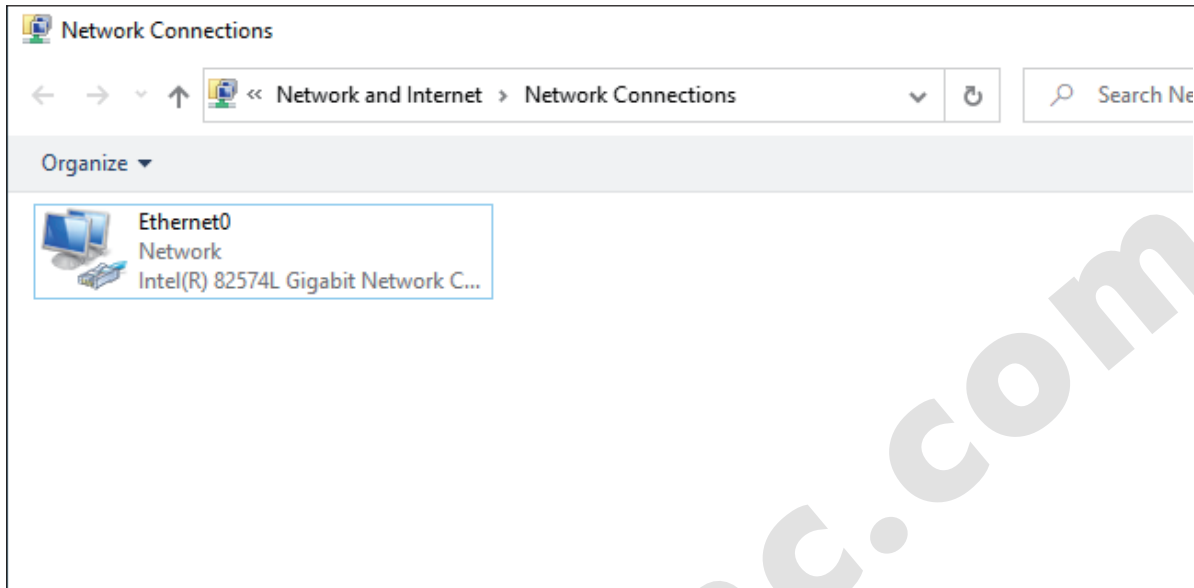


Figure 1 Find the Network Connections in Computer

Step 3: Right click and hit “Properties” and it popup the windows and double click “Internet Protocol Version 4 (TCP/IPv4)” as the Figure 3:

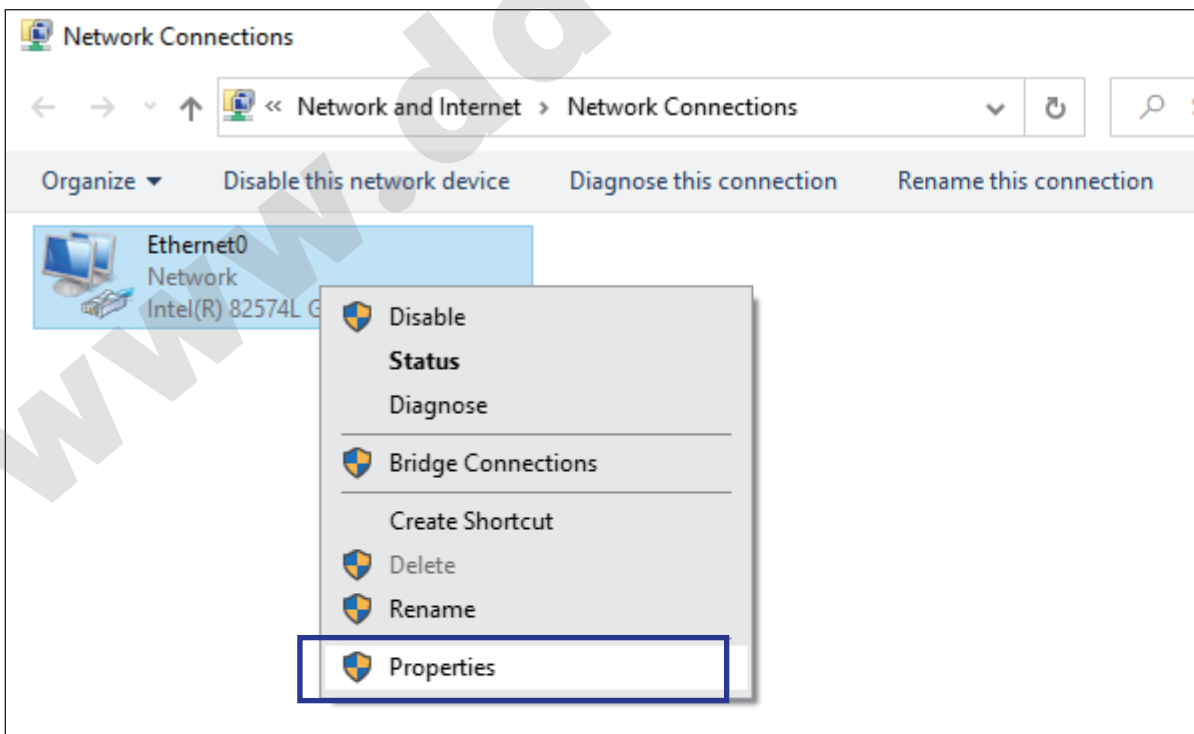


Figure 2 Properties

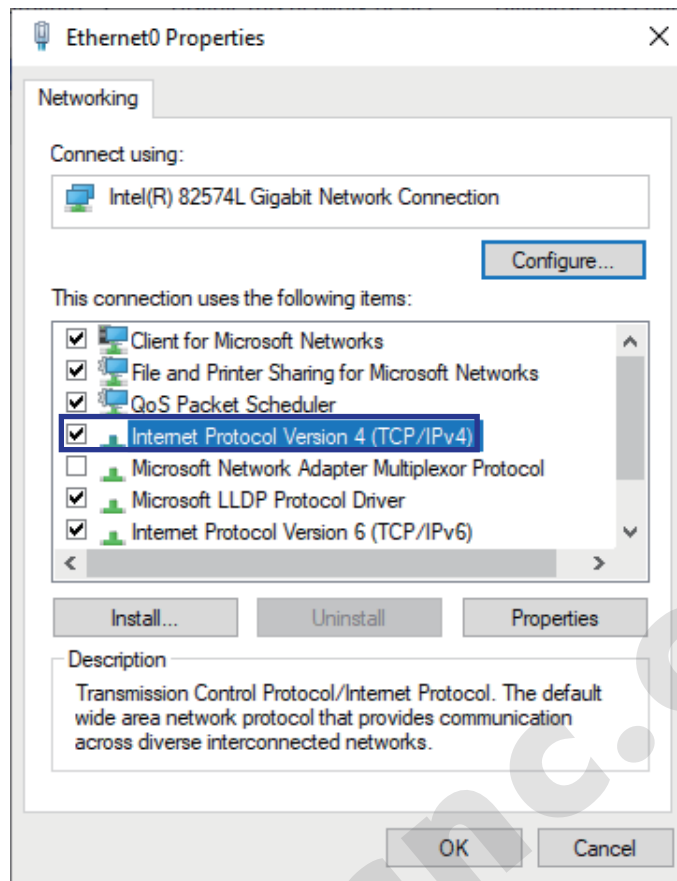


Figure 3

Step 4: Set the IP address and Subnet mask as Figure 4:

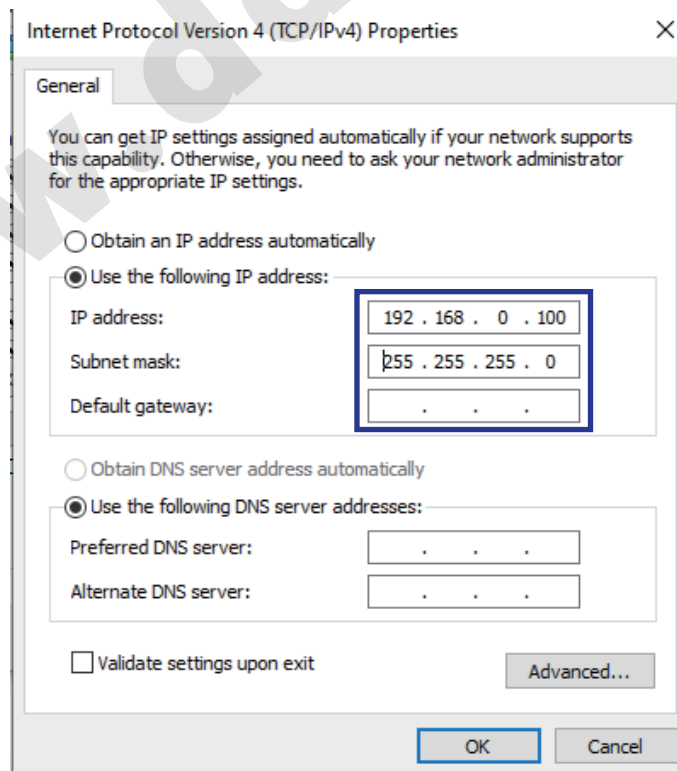


Figure 4 Set the IP address

Step 5: Turn Off the Firewall & network protection:

Go to Setting -> Update & Security -> Windows Security -> Firewall & network protection, and turn off the firewall:

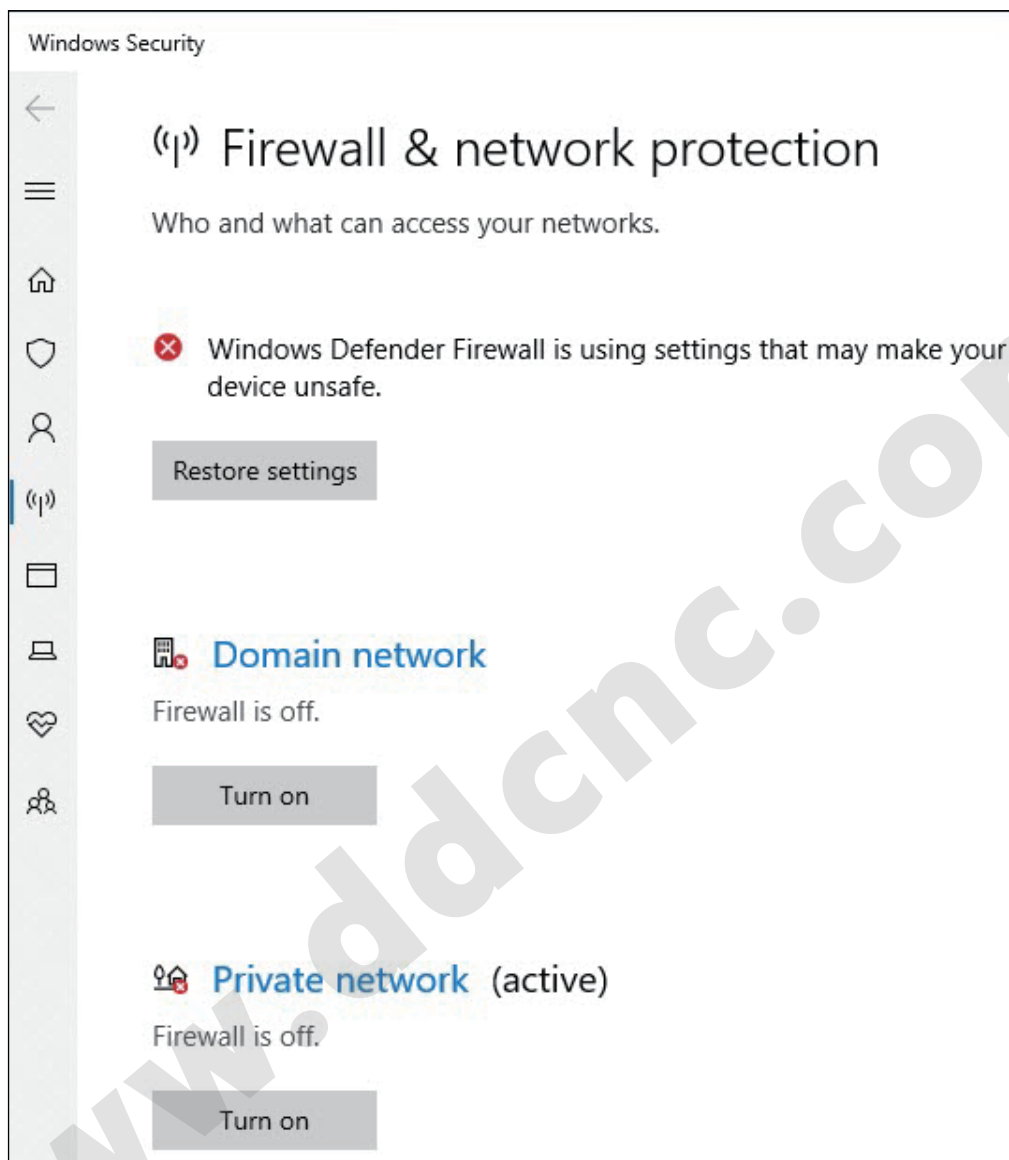


Figure 5 Turn off the Firewall of the computer

Step 6: Create a “Share” folder:

Go to Settings -> Network and Internet -> Network and sharing center -> change advanced sharing settings, “Turn on network discovery” and “turn on file and pinter sharing”, as Figure 6 and 7 shows; Then in your computer, you can create a folder name it as “share”.

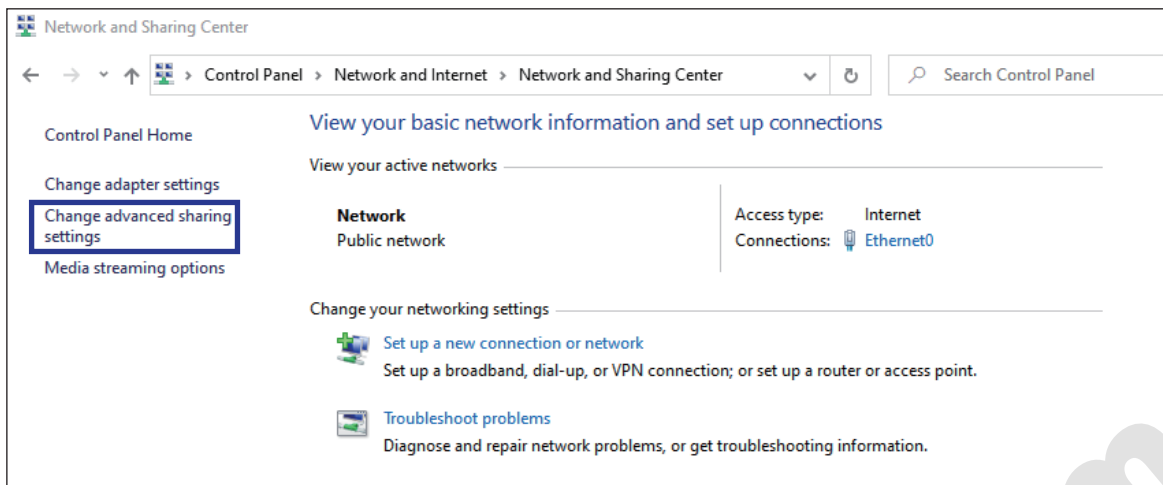


Figure 6

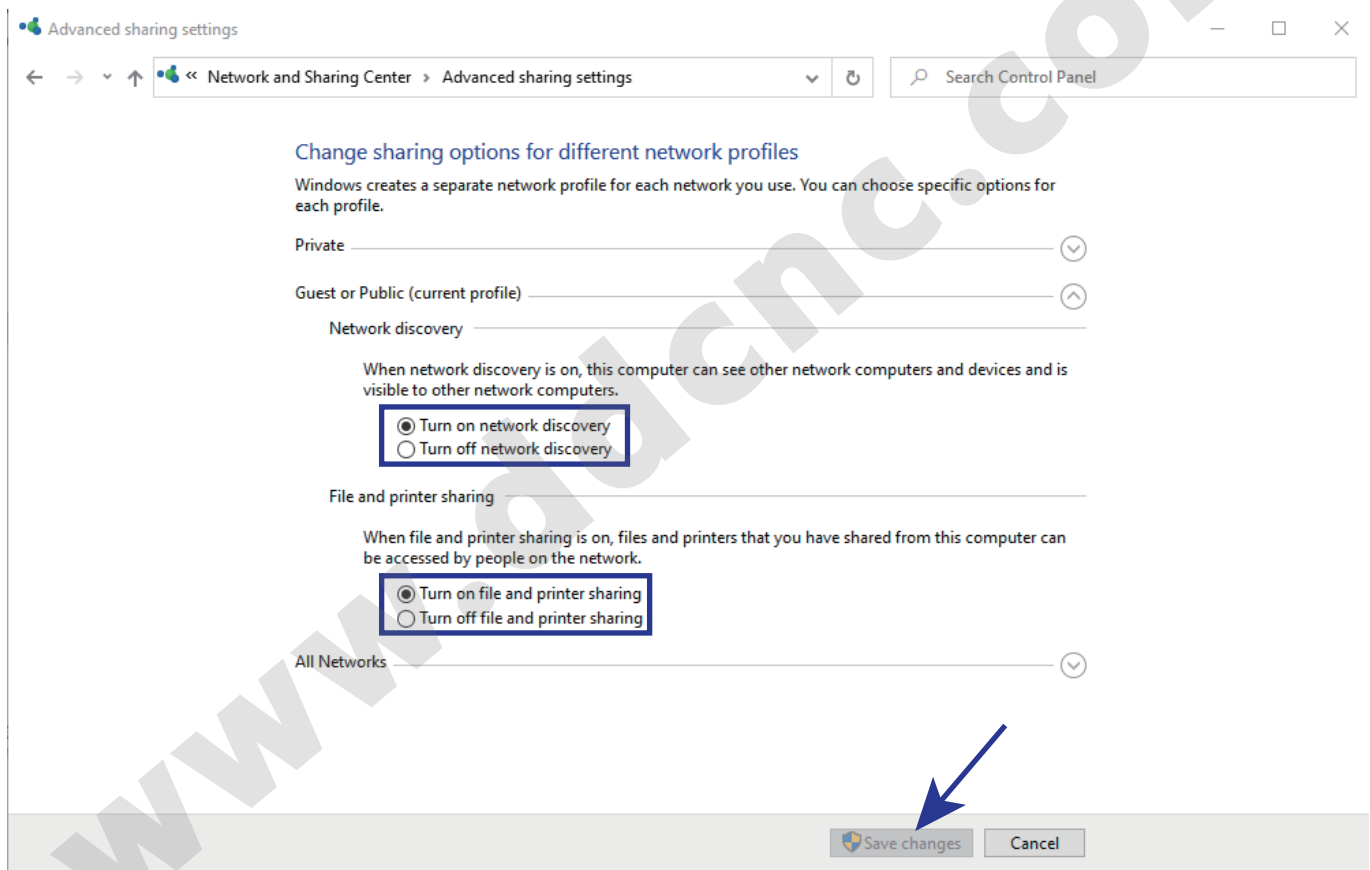


Figure 7

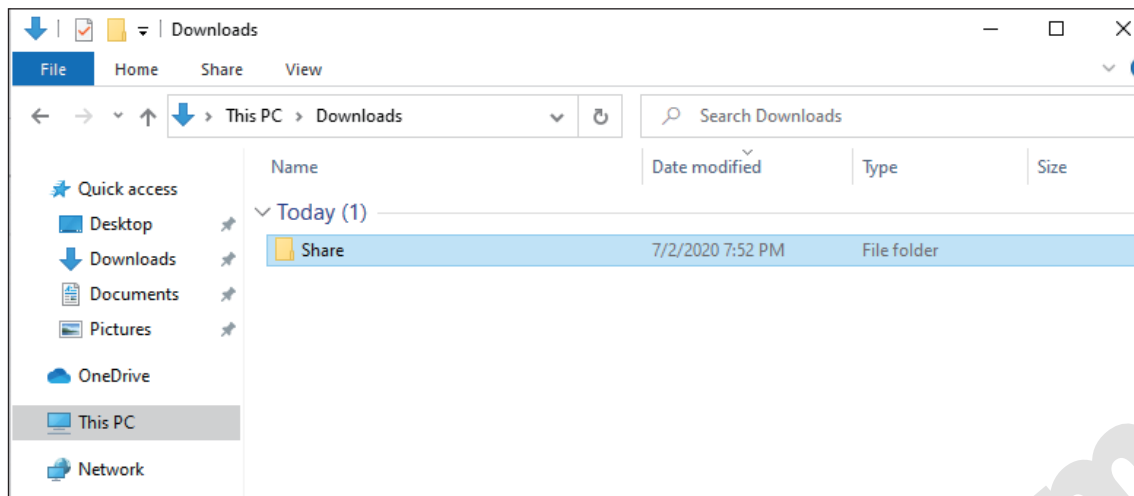


Figure 8

Step 7: Set the folder as “share” folder:

- 1) Right click the folder and click “Properties”, the “Properties” window popup as figure 10 shows;
- 2) click “Share button”, and “Network access” windows popup as figure 11 shows;
- 3) choose “Everyone”, and add it to the list;
- 4) Change the **Pernission level of “Everyone” to “Read/Write”, and confirm it.**

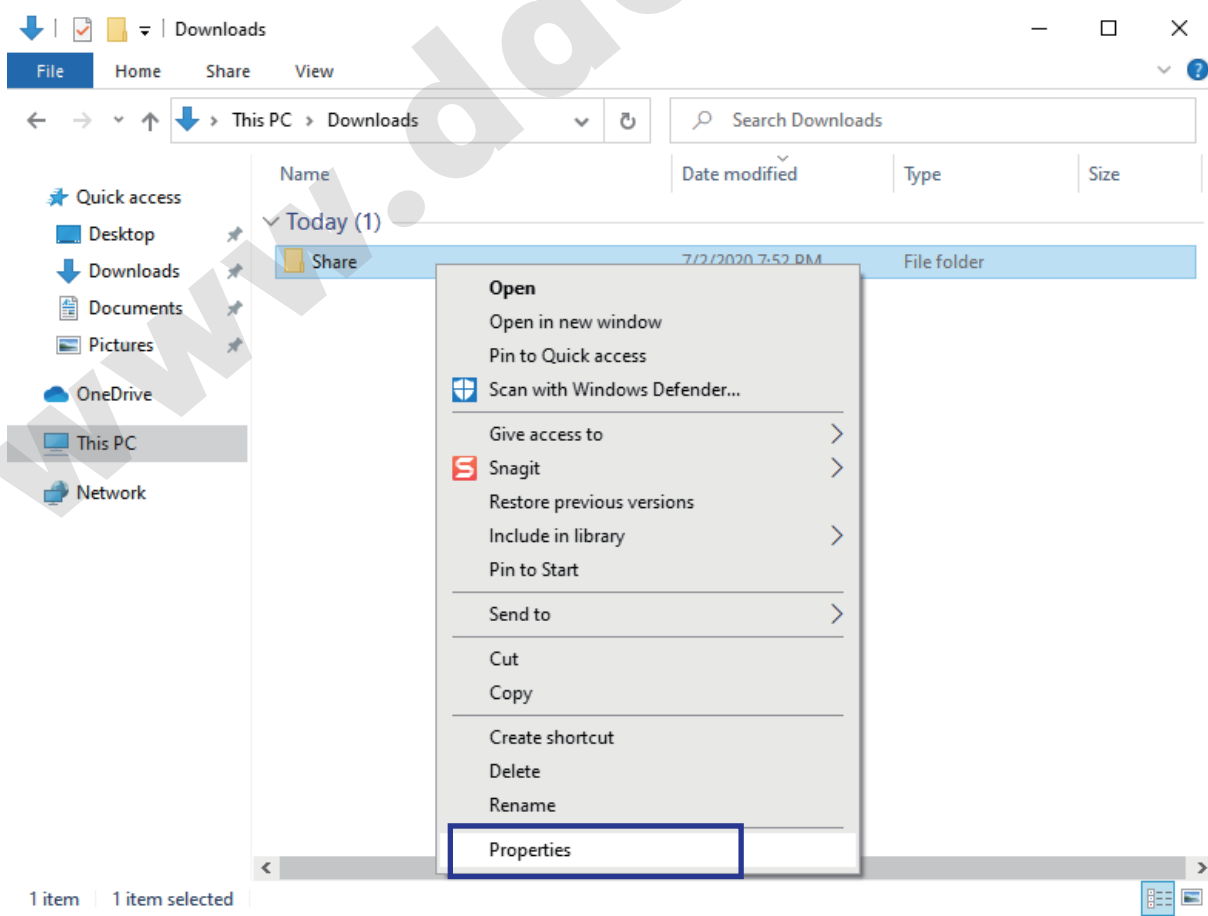


Figure 9

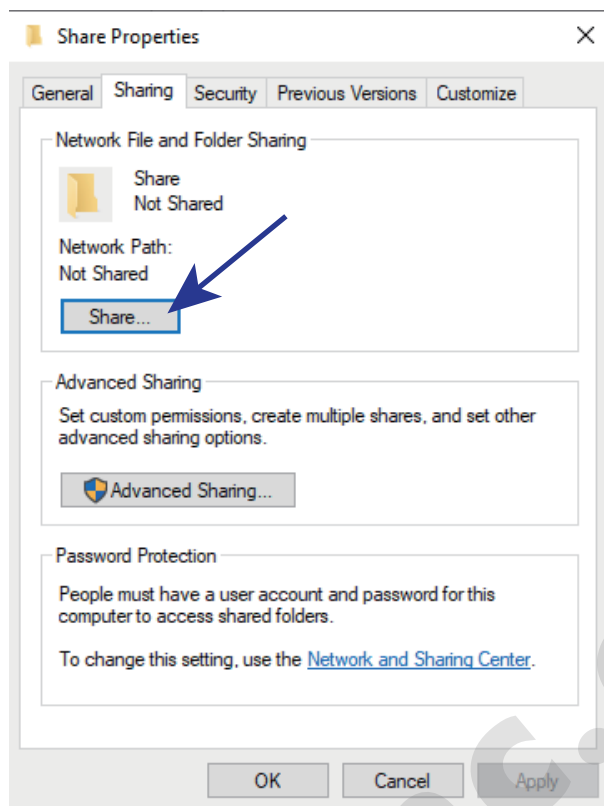


Figure 10

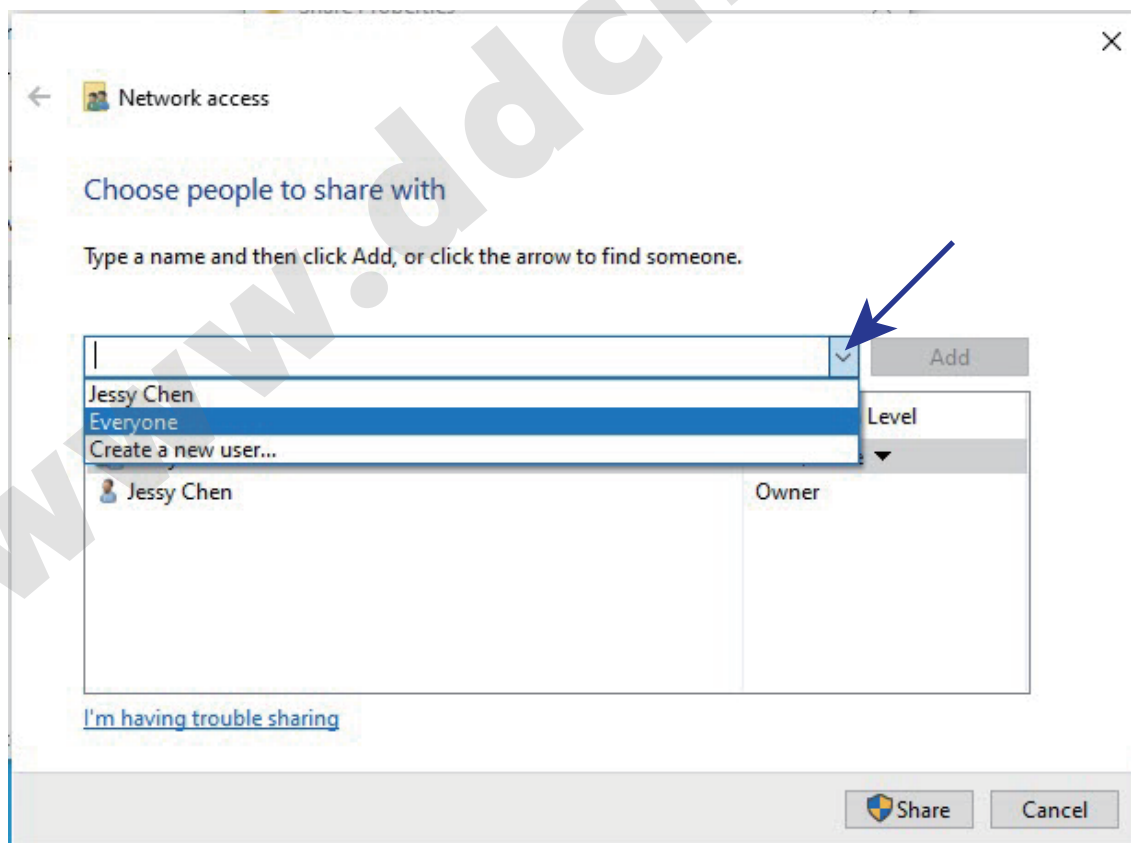


Figure 11

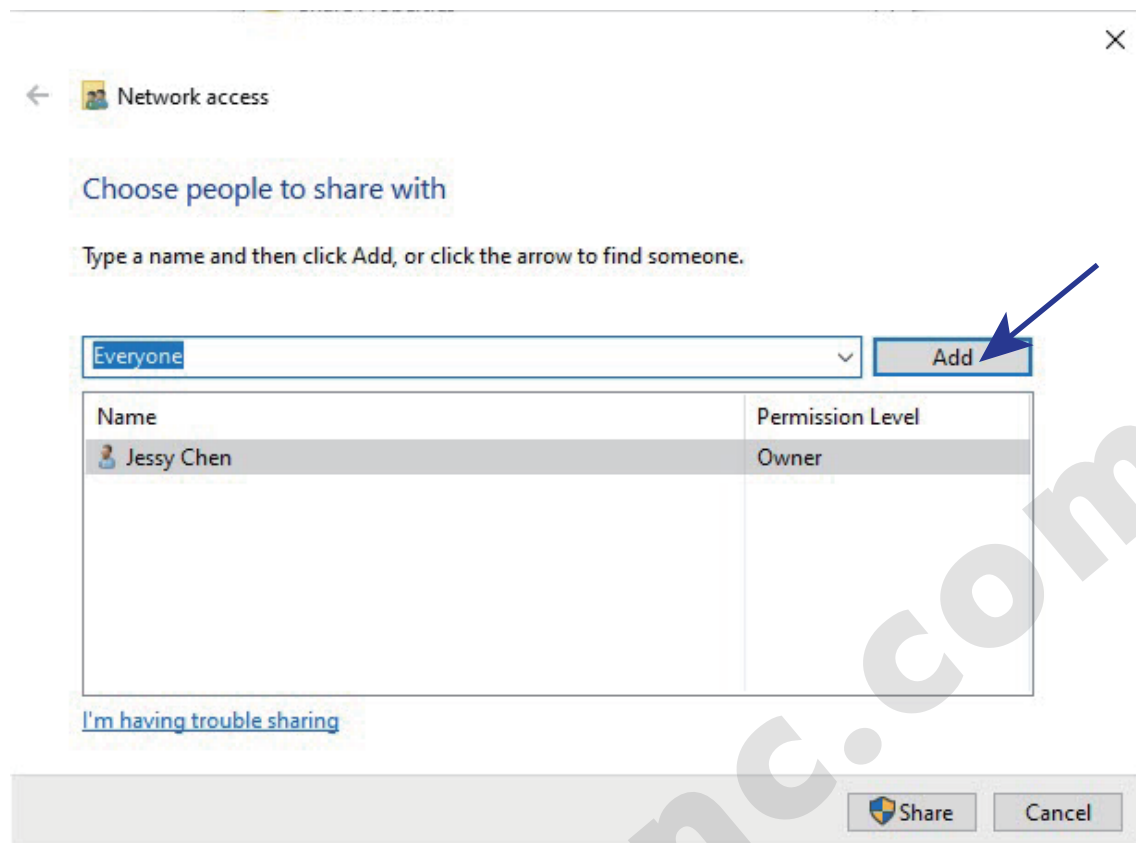


Figure 12 Chose "Everyone" and add it to the list

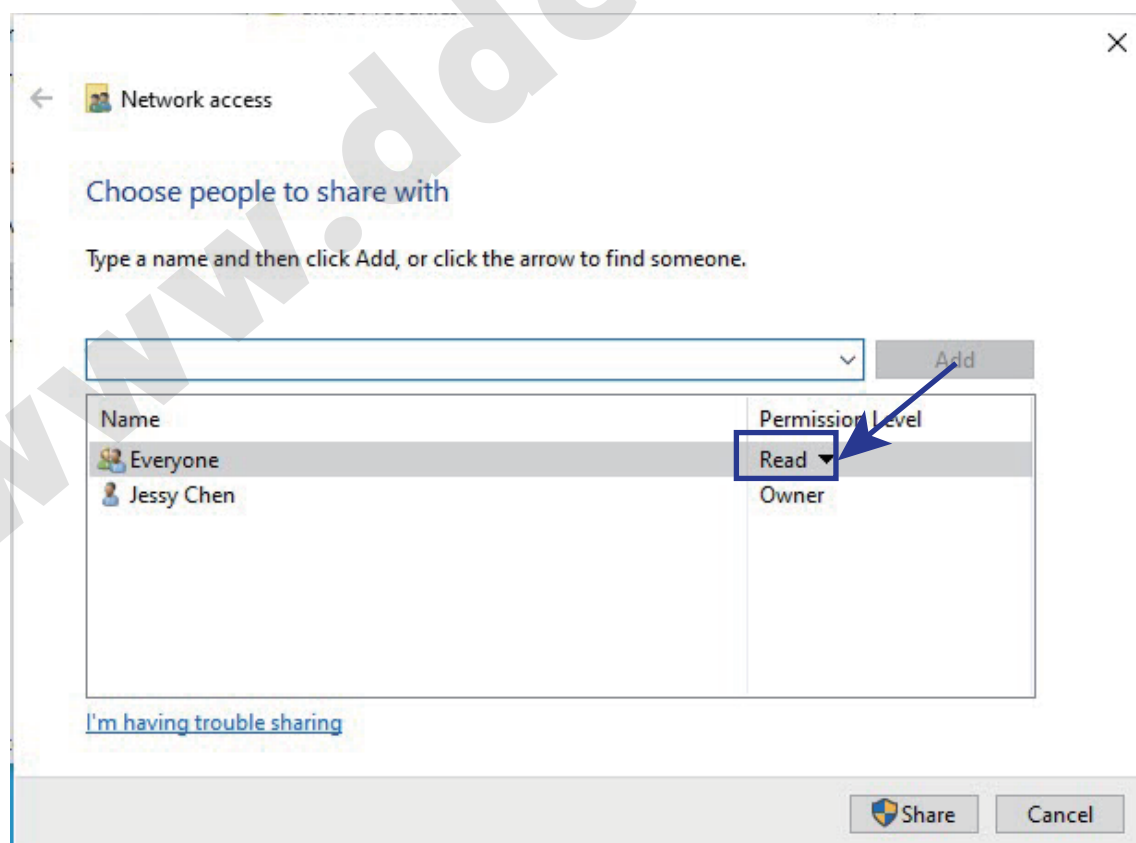


Figure 13 Change the Pernission level of "Everyone"

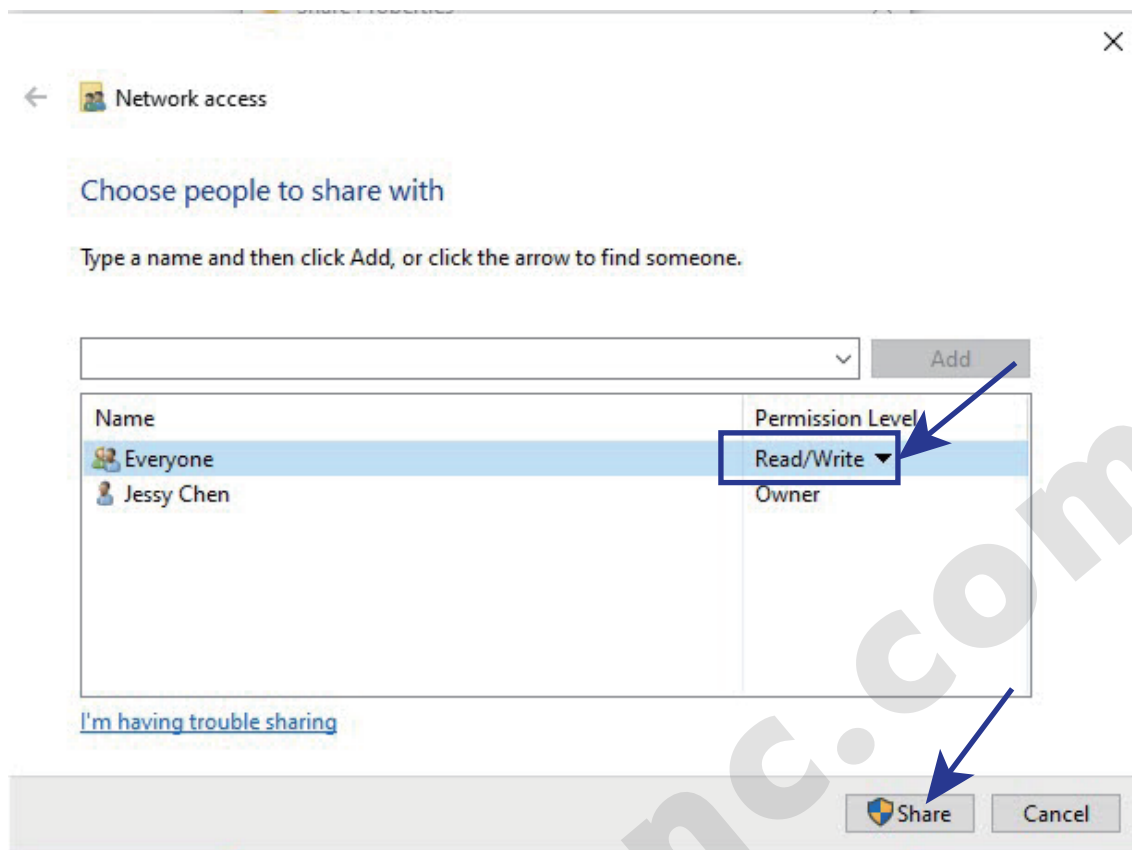


Figure 14 No forget to Click "Share"

2. Controller DDCSE Configuration

Step 1: Change the “Network Boot Mode” to “manu-IP”,it means the users can setup the IP settings manually in this mode.

- 1) Figure 15 shows the main page.This is Main Page,Press F3 to Parameter Page;
- 2) Find Para #0284 “Network Boot Mode”,press “Enter”;
- 3) Password window pop up,please input the password 888888 to continue;
- 4) Then please choose the “manu-IP” option.

CONT	READY	/udisk-sda1/ball1.nc	Monitor	2000/11/12 07:40:23	Super
<div><div>G54</div><div>X</div><div>Y</div><div>Z</div><div>A</div><div>B</div></div> <div><div>Mach</div><div>42.750</div><div>0.000</div><div>62.650</div><div>3.416</div><div>0.000</div></div> <div><div>Abs</div><div>42.750</div><div>0.000</div><div>62.650</div><div>3.416</div><div>0.000</div></div>			<div><div>FRO</div><div>100%</div></div> <div><div>SRO</div><div>100%</div></div> <div><div>SJR</div><div>Low</div><div>100%</div></div> <div><div>Feed Rate</div><div>0</div><div>3000</div></div> <div><div>Analog S</div><div>0</div><div>14000</div></div> <div><div>Cur Tool</div><div>T1</div></div> <div><div>Total No.</div><div>0</div></div> <div><div>Cur No.</div><div>0</div></div> <div><div>Cycle Times</div><div>0</div></div> <div><div>Work Time</div><div>00:00:00</div></div> <div><div>G49 H 0</div></div>		
0:G40 G17 G49 G80 G90 G54					
1:G00 X3. Y0.0 S24000 M03					
2:Z10.					
3:G01 Z3.1 F1000.					
4:G01 X2.996 Z2.948 F3000. M08					
Monitor	Program	Param	IO	System Log	System Info

Figure 15 Main Page

CONT	READY	/udisk-sda1/ball1.nc	Param	2000/11/12 07:39:50	Super
Param List:		No.	Note	Value	
Machine	0241	Enable buzzer feedback		Yes	
Manual	0244	Enable realtime toolpath		Yes	
	0245	Toolpath mode		Statue	
Process	0247	Interpolation period		0.005	
Spindle	0248	LOGO display time		0.100	
	0261	X-axis rotation angle in 3D toolpath mode		0.000	
IO	0262	Y-axis rotation angle in 3D toolpath mode		0.000	
Home	0263	Z-axis rotation angle in 3D toolpath mode		0.000	
Probe	0266	Serial 1 baud rate		B2400	
	0267	Serial 1 baud rate		B2400	
Hard Limit	0278	USB keyboard type		keyboard	
Software limit	0279	Barcode file location		Local	
MPG	0283	Barcode scanning processing		No	
Backlash	0284	Network boot mode		Close	
Tools	Range:		[0~2]	Active:	Immediately
	Details:			User:	Admin
System					
▲	Param List	Search	Param Backup	Param Restore	

Figure 16 Para# 0284

CONT	READY	/udisk-sda1/ball1.nc	Param	2000/11/12 08:00:52	Guest
Param List:		No.	Note	Value	
Machine		0241	Enable buzzer feedback	Yes	
Manual		0244	Enable realtime toolpath	Yes	
Process		0245	Toolpath mode	Statue	
Spindle		0247	Interpolation period	0.005	
IO		0248	LOGO display time	0.100	
Home		0261	X-axis rotation angle in 3D toolpath mode	0.000	
Probe		0262	Y-axis rotation angle in 3D toolpath mode	0.000	
Hard Limit		0263	Z-axis rotation angle in 3D toolpath mode	0.000	
Software limit		0266	Serial 1 baud rate	B2400	
MPG		0267	Serial 1 baud rate	B2400	
Backlash		0278	USB keyboard type	keyboard	
Tools		0279	Barcode file location	Local	
System		0283	Barcode scanning processing	No	
		0284	Network boot mode	Close	
		Range: [0~2]		Active: Immediately	User: Admin
		Details:			
▲	Param List	Search	Param Backup	Param Restore	

Figure 17 Password window popup

CONT	READY	/udisk-sda1/ball1.nc	Param	2000/11/12 08:00:58	Guest
Param List:		No.	Note	Value	
Machine		0241	Enable buzzer feedback	Yes	
Manual		0244	Enable realtime toolpath	Yes	
Process		0245	Toolpath mode	Statue	
Spindle		0247	Interpolation period	0.005	
IO		0248	LOGO display time	0.100	
Home		0261	X-axis rotation angle in 3D toolpath mode	0.000	
Probe		0262	Y-axis rotation angle in 3D toolpath mode	0.000	
Hard Limit		0263	Z-axis rotation angle in 3D toolpath mode	0.000	
Software limit		0266	Serial 1 baud rate	B2400	
MPG		0267	Serial 1 baud rate	B2400	
Backlash		0278	USB keyboard type	keyboard	
Tools		0279	Barcode file location	Local	
System		0283	Barcode scanning processing	No	
		0284	Network boot mode	Close	
		Range: [0~2]		Active: Immediately	User: Admin
		Details:			
▲	Param List	Search	Param Backup	Param Restore	

Figure 18 Input Password 888888 to continue

CONT	READY	ball1.nc	Param	2000/11/12 07:54:50	Guest
Param List:		No.	Note	Value	
Machine		0241	Enable buzzer feedback	Yes	
Manual		0244	Enable realtime toolpath	Yes	
Process		0245	Toolpath mode	Statue	
Spindle		0247	Interpolation period	0.005	
IO		0248	LOGO display time	0.100	
Home		0261	X-axis rotation angle in 3D toolpath mode	0.000	
Probe		0262	Y-axis rotation angle in 3D toolpath mode	0.000	
Hard Limit		0263	Z-axis rotation angle in 3D toolpath mode	0.000	
Software limit		0266	Serial 1 baud rate	B2400	
MPG		0267	Serial 1 baud rate	B2400	
Backlash		0278	USB keyboard type	keyboard	
Tools		0279	Barcode file location	Local	
System		0283	Barcode scanning processing	No	
		0284	Network boot mode	manu-IP	
		Range: [0~2]		Active: Immediately	User: Admin
		Details:			
▲	Param List	Search	Param Backup	Param Restore	

Figure 19 Changed the mode to "manu-IP"



Step 2: Set the IP address

- 1) Go back to Main page and Press F6 To System Info,as figure 20 shows;
- 2) Press F4 and choose “Set Ip Addr” as Figure 21 shows;
- 3) Press Enter and move down to “Cable IP Addr”,it shows as Figure 22 shows;
- 4) Press Enter key and input the controller IP address “192.168.0.99”;
- 5) Press F4 again and Go to “Host IP address” as Figure 24 shows;
- 6) Press Enter and input Computer (Host) IP address “192.168.0.100” as Figure 25 shows;
- 7) Now,remember,now restart the controller,never forget this step,go to “System info” Page again,it just shows as the Figure 26,that means the IP setting is succesful.

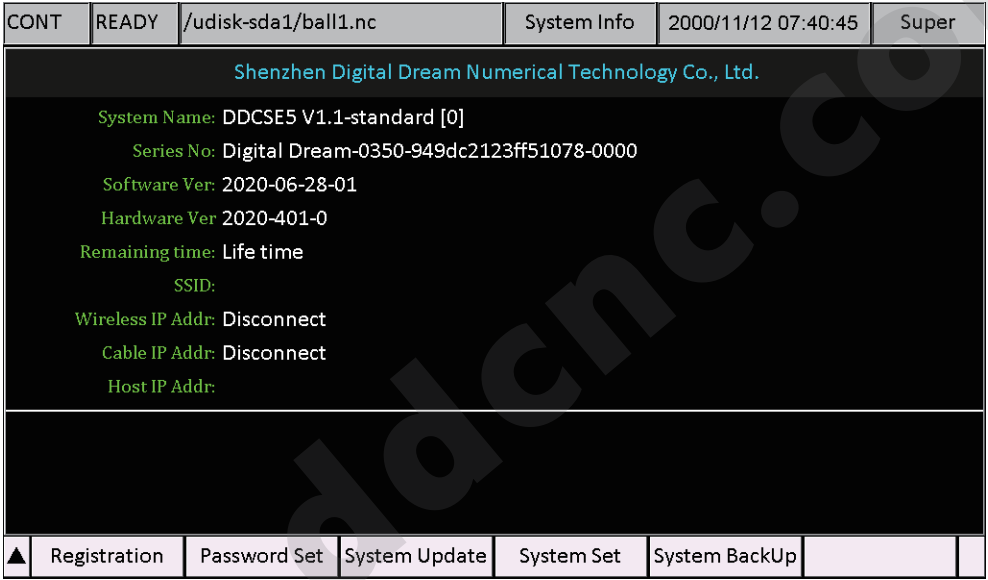


Figure 20 “System info” Page

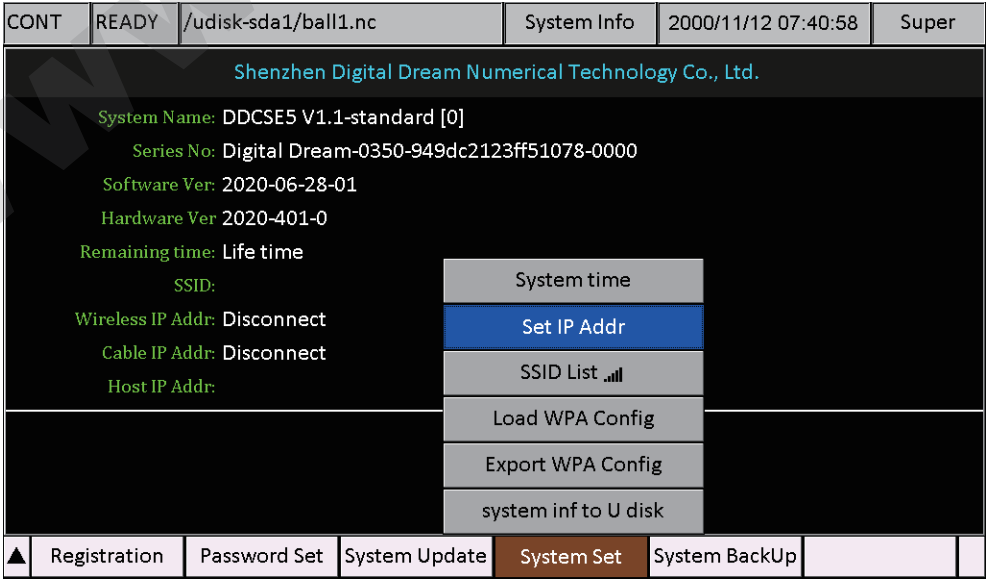


Figure 21 Set IP Address

CONT	READY	/udisk-sda1/ball1.nc	System Info	2000/11/12 07:41:13	Super
------	-------	----------------------	-------------	---------------------	-------

Shenzhen Digital Dream Numerical Technology Co., Ltd.

System Name: DDCSE5 V1.1-standard [0]

Series No: Digital Dream-0350-949dc2123ff51078-0000

Software Ver: 2020-06-28-01

Hardware Ver: 2020-401-0

Remaining time: Life time

SSID:

Wireless IP Addr: Disconnect

Cable IP Addr: Disconnect

Host IP Addr:

Wireless IP Addr

Cable IP Addr

Host IP Addr

▲	Registration	Password Set	System Update	System Set	System BackUp	
---	--------------	--------------	---------------	------------	---------------	--

Figure 22 Cable IP Address

CONT	READY	/udisk-sda1/ball1.nc	System Info	2000/11/12 07:33:38	Guest
------	-------	----------------------	-------------	---------------------	-------

Shenzhen Digital Dream Numerical Technology Co., Ltd.

System Name: DDCSE5 V1.1-standard [0]

Series No: Digital Dream-0350-949dc2123ff51078-0000

Software Ver: 2020-06-28-01

Hardware Ver: 2020-401-0

Remaining time: Life time

SSID:

Wireless IP Addr: Disconnect

Cable IP Addr: Disconnect

Host IP Addr:

Wireless IP Addr

Cable IP Addr

Host IP Addr

▲	Registration	Password Set	System Update	System Set	System BackUp	
---	--------------	--------------	---------------	------------	---------------	--

Figure 23 Enter controller IP address "192.168.0.99"

CONT	READY	/udisk-sda1/ball1.nc	System Info	2000/11/12 08:00:16	Guest
------	-------	----------------------	-------------	---------------------	-------

Shenzhen Digital Dream Numerical Technology Co., Ltd.

System Name: DDCSE5 V1.1-standard [0]

Series No: Digital Dream-0350-949dc2123ff51078-0000

Software Ver: 2020-06-28-01

Hardware Ver: 2020-401-0

Remaining time: Life time

SSID:

Wireless IP Addr: Disconnect

Cable IP Addr: Disconnect

Host IP Addr:

Wireless IP Addr

Cable IP Addr

Host IP Addr

▲	Registration	Password Set	System Update	System Set	System BackUp	
---	--------------	--------------	---------------	------------	---------------	--

Figure 24 Go to Host IP address

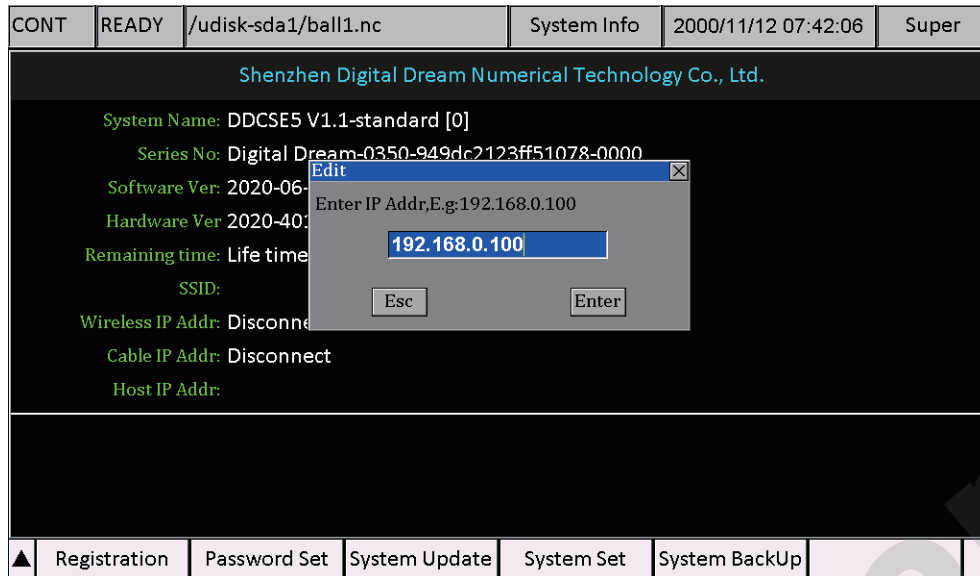


Figure 25 Input the Host Computer IP address

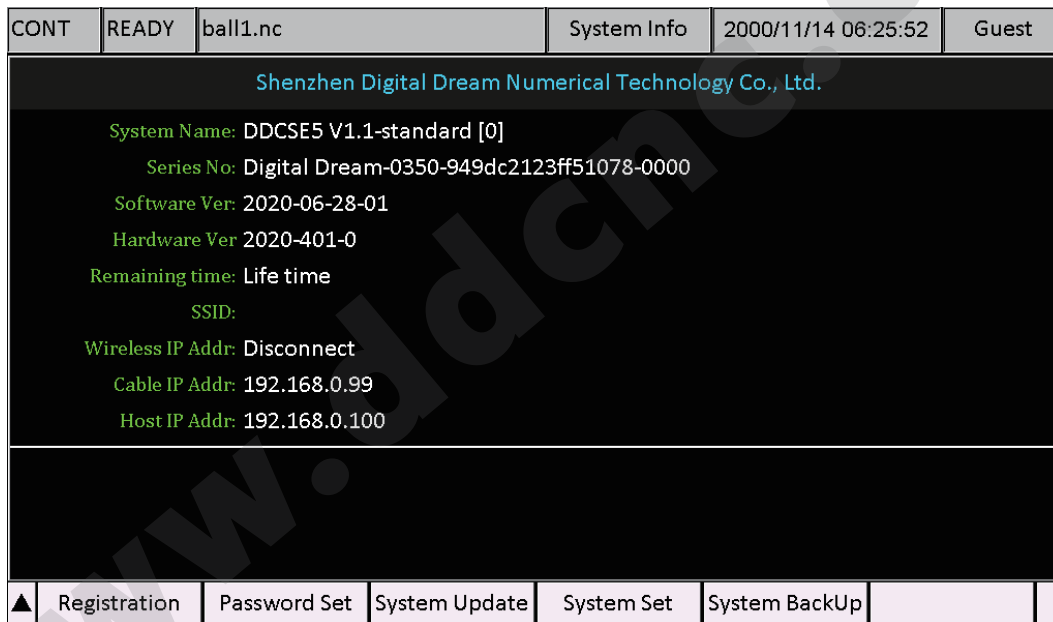


Figure 26 After Restart we can see the IP setting is successful

Step 3: Check the files from the Host (computer)

- 1) Copy the files you need into the folder “share” on the computer as Figure 27;
- 2) In the Page of Program,press the “Switich disks” button(F1), switch to “Net Disk”,and we can see the files as Figure 28;

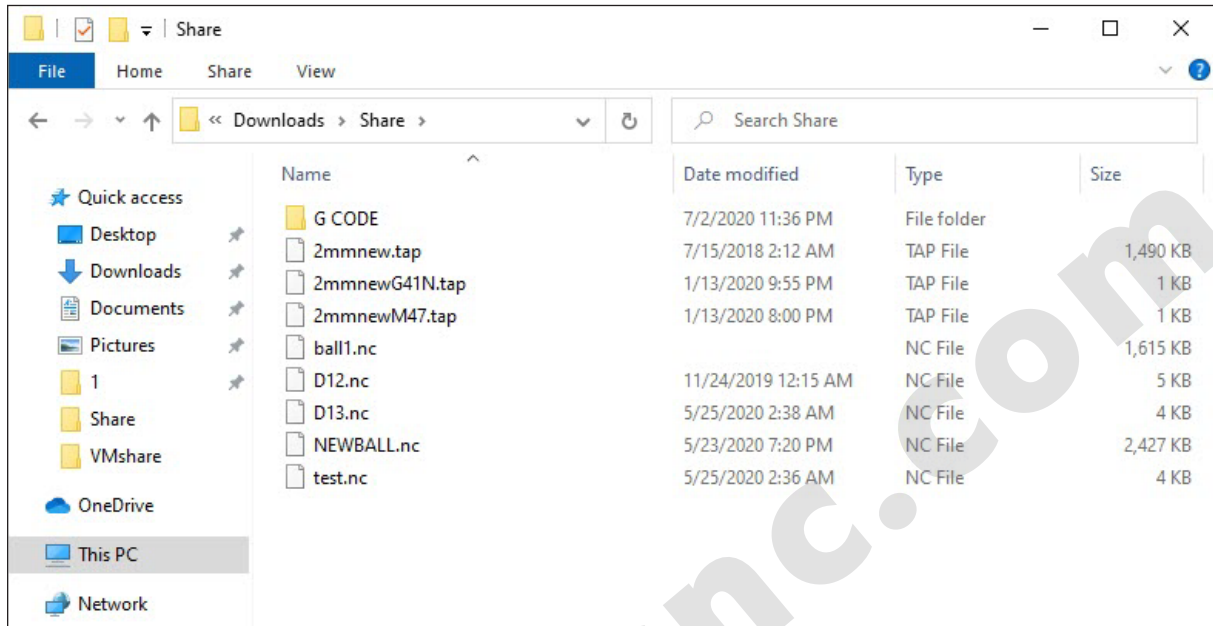


Figure 27 After Restart we can see the IP setting is successful

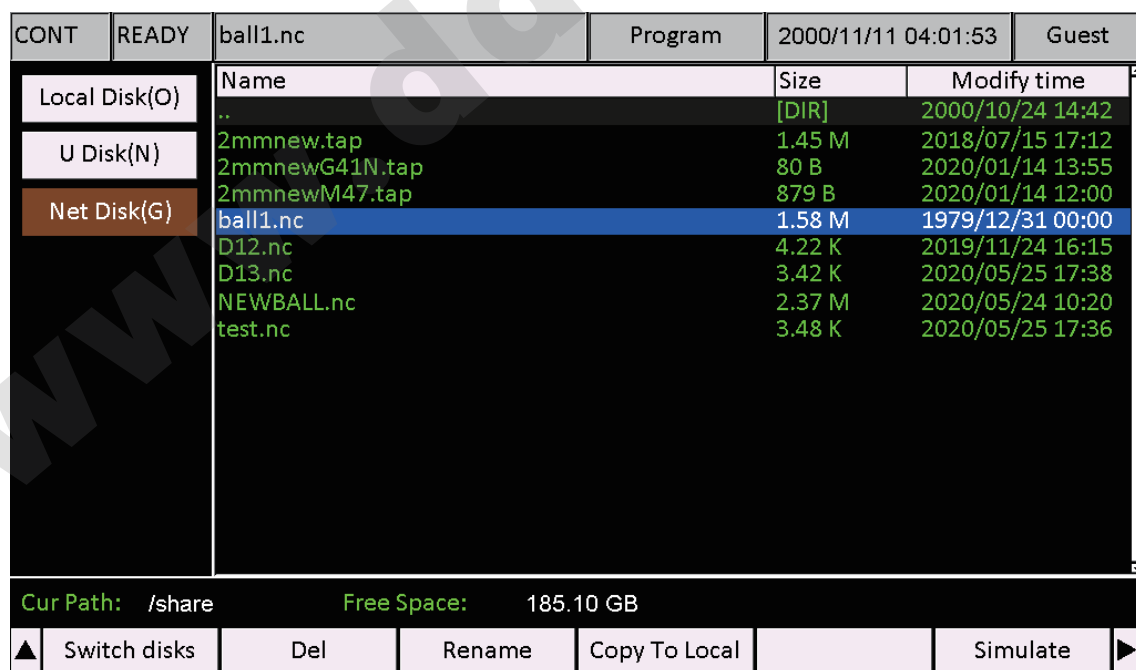


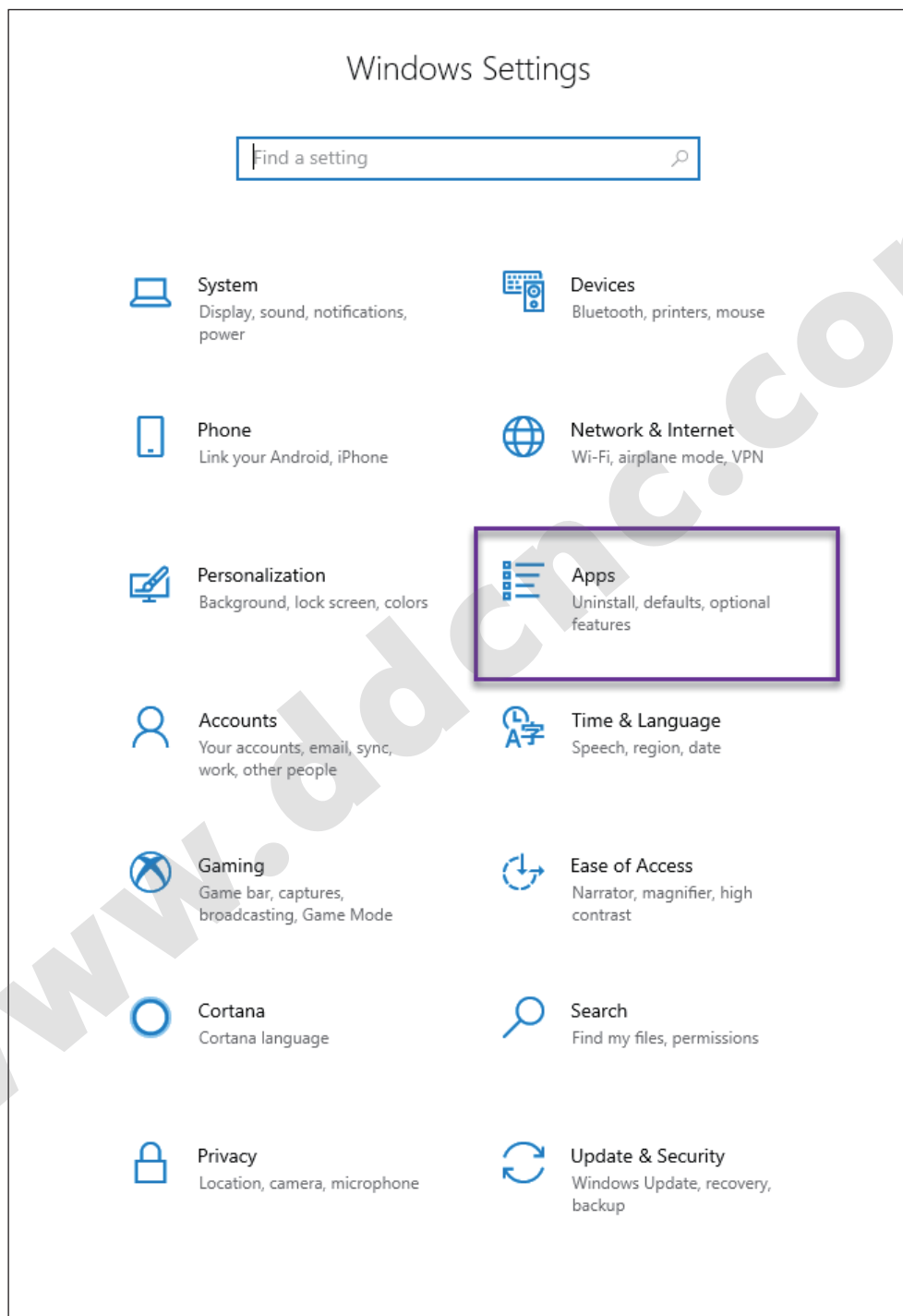
Figure 28 Net Disk shows the files from Computer

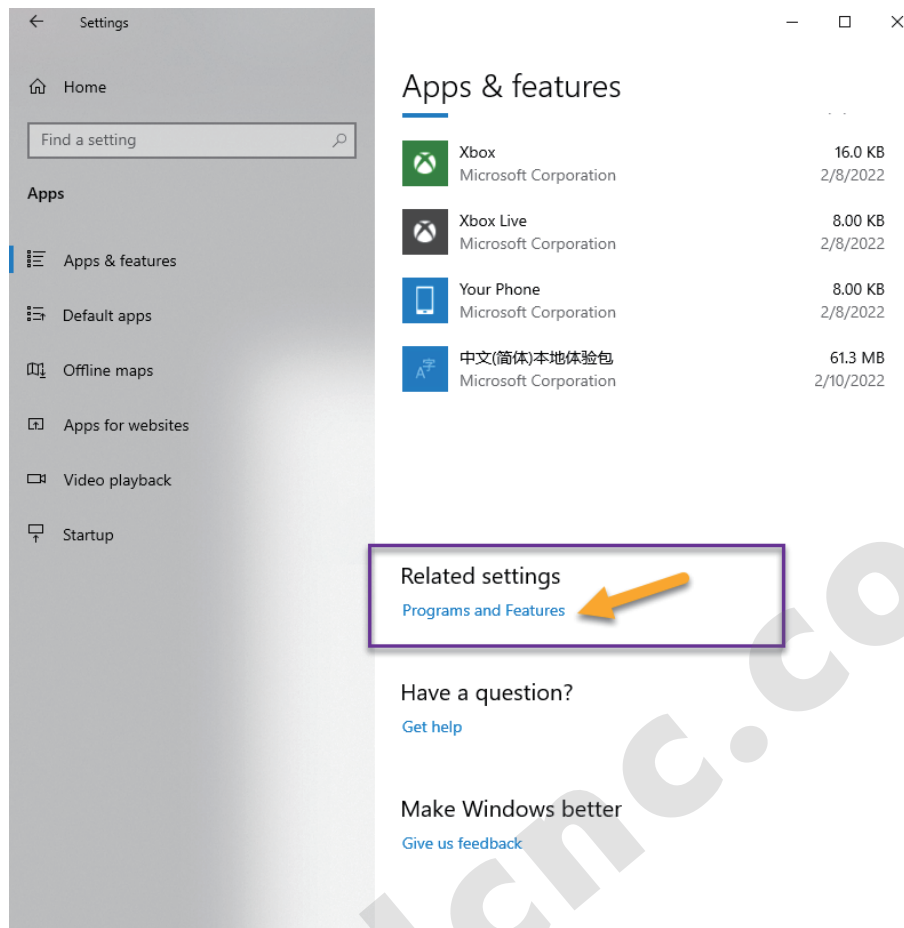
Please Note: U-disk and Net Disk cannot active at the same time.

PS: Check The SMB 1.1 status

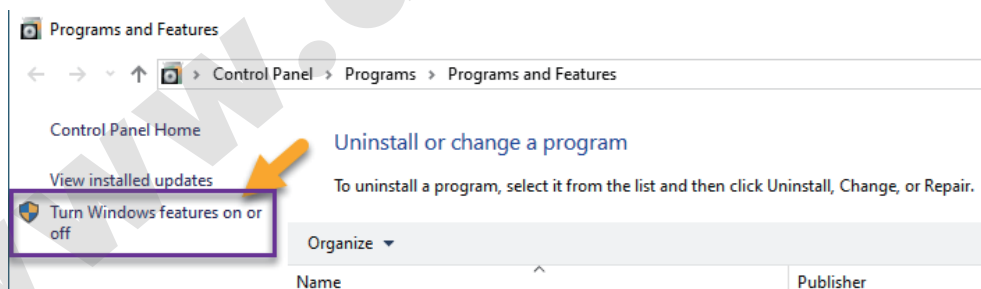
Before we build up the Ethernet communication be sure that the SMB 1.1 is active .

Step 1: Window -- Setting -- Apps, in the page click “Programs and Features”.





Step 2: Click “Turn Windows features on or off”:



Step 3: Tick mark “SAM 1.0/CIFS File Sharing Support”

